

# ***REELSTRONG***<sup>®</sup>

## ***UTILITY FLEET***

### **PD POLE DINKY SPECS**



#### **EXCLUSIVE STANDARD ADDED VALUE:**

- Industry Leading Safety, Ease of Use, Low Maintenance and Durability.
- Low Center of Gravity to Prevent Roll-Over.
- Three-Strap Pole Securement to Ensure Load Stays in Place Throughout Transportation.
- Deep V Cradles to Prevent Poles from Rolling, Shifting, or Sliding.
- Great Value

***BUILT FOR SAFETY. BUILT FOR SPEED. BUILT TO LAST.***

## **CAPACITIES**

- PD3: 3,000 lbs. GVWR
- PD7: 8,050 lbs. GVWR @ 15% Tongue Weight
- PD15: 17,250 lbs. GVWR @ 15% Tongue Weight

## **AXLES**

- PD3: 3K lbs. Torsion
- PD7: 7K lbs. Torsion
- PD15: 15K lbs. Sprung

## **WHEELS**

- PD3: (2) 15 x 6JJ / 5 on 4.5 BC w/ ZeroSet
- PD7: (2) 16 x 6K / 8 on 6.5 BC w/ ZeroSet
- PD15: (2) 17.5 x 6.75 HC / 8 on 275mm BC w/ 5.60 Outset

## **TIRES**

- PD3: (2) ST-205/75R15 LR-C Tires
- PD7: (2) ST-235/85R16 LR-E Tires
- PD15: (2) ST-215/75R17.5 LR-H Tires

## **BRAKES**

- PD3: No Brakes
- PD7: 12.00" x 2.00" Electric w/ Safety Breakaway Kit
- PD15: 12.25" x 5.00" Electric w/ Safety Breakaway Kit

## **PAYLOAD: ALL FINAL PAYLOADS BASED ON CHOSEN MODEL AND OPTIONS**

### **OVERALL LENGTH**

- PD3: 112.00"
- PD7: 112.00"
- PD15: 111.25"

### **OVERALL WIDTH**

- PD3: 79.25"
- PD7: 79.25"
- PD15: 79.25"

**OVERALL WEIGHT:** Actual Trailer Weight will Vary with Options & Finishes Chosen.

### **POLE SEAT HEIGHT**

- PD3: 28.75"
- PD7: 29.25"
- PD15: 40"

## **STANDARD FEATURES**

- Oil Bath Hubs (Greaseable Option All)
- Wheel Chock Holders
- Electric Brakes (on PD7/PD15)
- Swing-Away Front Jack Stand
- Tongue Lift Handles
- Cradles: Deep V w/ Saw-Tooth Grip (PD3/PD7)

## **POLE SECUREMENT**

- Binding: (3) 4" Strap Binders w/ 4" Ratchet Straps

## **STANDARD TRAILER BODY**

- Heavy Duty 5" Channel Frame (PD3/PD7)
- Heavy Duty Rectangular Tube Frame (PD15)
- 1/8" Tread Plate Fenders
- 5 Position Adjustable Hitch
- 3/8" X 36" GR70 Yellow Zinc Safety Chains with Hooks
- Expanded Metal Cargo Area

## **WIRING**

- DOT / ICC Approved LED Lights and Conspicuity Reflective Tape
- Internal Cat Track Protects Wiring (and air brakes if applicable)
- Removable Rear Access Door for Cat Track and Wiring
- Sealed Beam, Rubber Mounted Stop, Turn, Tail and Marker Lights
- 100% Sealed Heat-Shrunked Wiring Connections w/ Full Loom
- Breakaway Kit with Absorbed Glass Mat (AGM) Battery

## **PAINT**

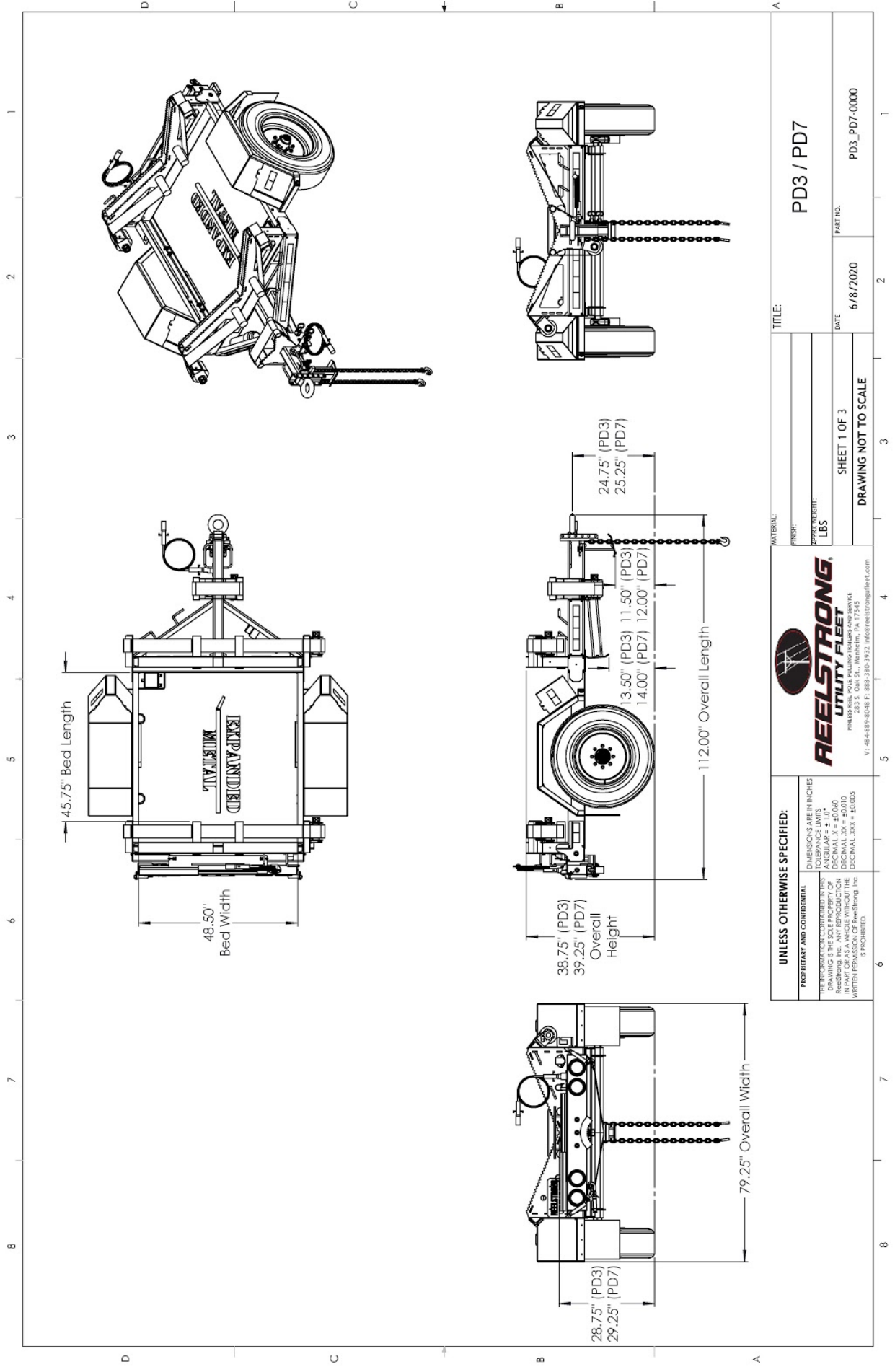
- I.M.P.A.C.T. Intense Metal pH Acid Cleaning Technology
- Hydrofluoric, Sulfuric, Phosphoric ACID Blend Cleaning Preparation (Re-used sandblasting material can impregnate metals with oil)
- Seams Caulked
- Rust Preventative 2-Part Epoxy Primer
- Standard Colors: Red, Black, White and CAT Yellow

## **LIGHT BAR**

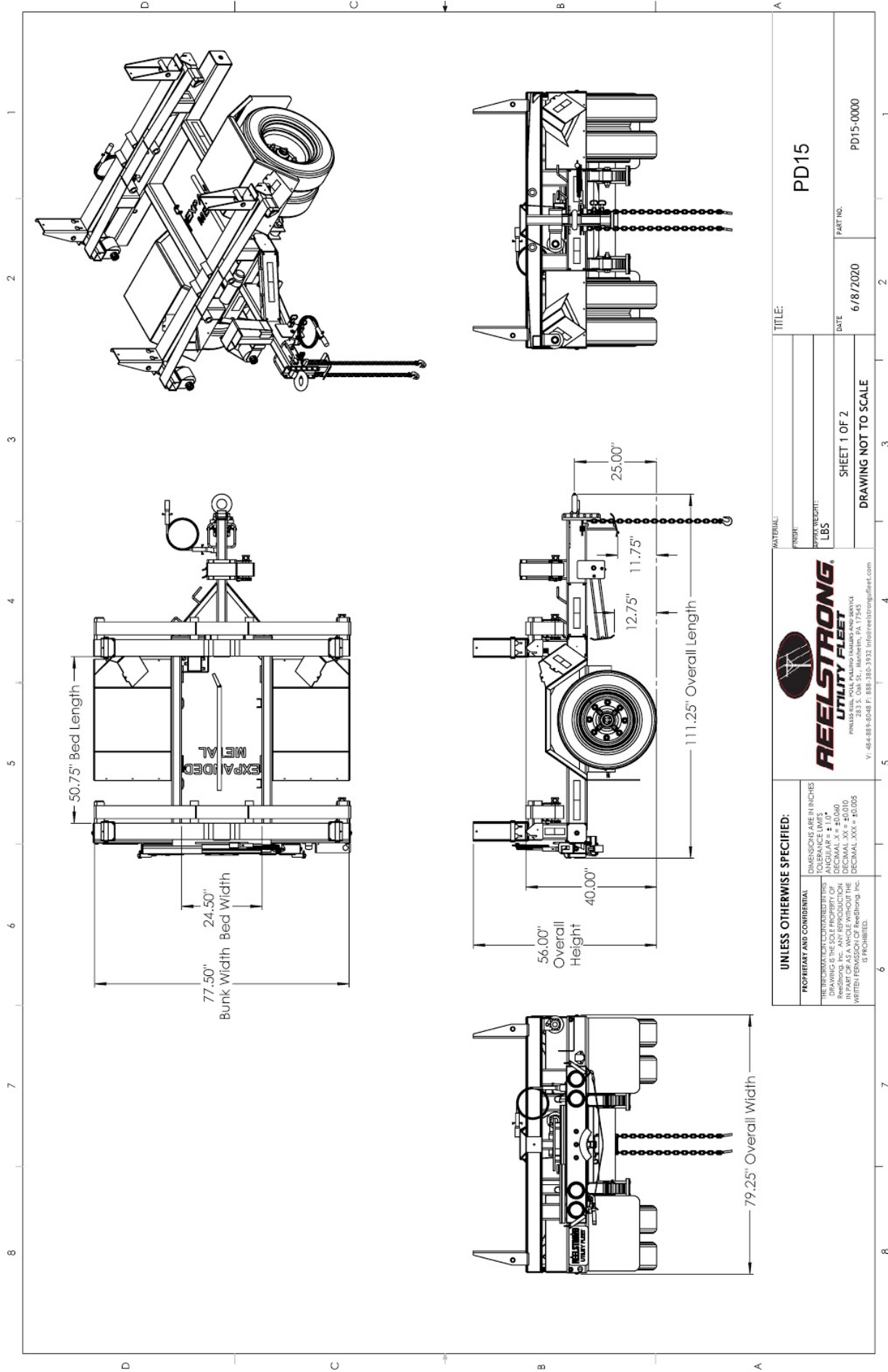
- All TIG Welded Aluminum
- Contains (4) Four 4" Stop/Turn / Tail Rubber Mounted Sealed Beam LED Lights
- (3) Three Center ID Marker Lights and (2) Two Side Marker Lights
- 7-Way Die Cast Connector
- 35' Standard Electric Cable Length with a 7-Way Connector Plug

## OPTIONS

- 10-Year Galvanized Structural Warranty (2-Year Painted)
- Wiring Connections Soldered and Sealed w/ Heat Shrink Tubing
- Plug-and-Play Sealco Wiring Harness
- Wheel Chocks: Rubber or All Weather Galvanized Grip Strut
- Spare Tire and Mount
- Solar Charged Breakaway Kit
- Bolt-On Pole Muzzle
- Heavy-Duty Pole Muzzle
- Cradles: H-Beam w/ Non-Binding Stanchions
- Truck-Lite Lighting



UNLESS OTHERWISE SPECIFIED:		REELSTRONG UTILITY FLEET		PD3 / PD7	
DIMENSIONS ARE IN INCHES		TOLERANCE LIMITS		TITLE:	
ANGULAR ± 1.0°		DIMENSIONAL ± 0.005		MATERIAL:	
DECIMAL ± 0.005		FRACTIONAL ± 1/32		FINISH:	
FRACTIONAL ± 1/32		DECIMAL ± 0.005		SUPPLY WEIGHT:	
FRACTIONAL ± 1/32		DECIMAL ± 0.005		LBS	
FRACTIONAL ± 1/32		DECIMAL ± 0.005		SHEET 1 OF 3	
FRACTIONAL ± 1/32		DECIMAL ± 0.005		DATE	
FRACTIONAL ± 1/32		DECIMAL ± 0.005		6/8/2020	
FRACTIONAL ± 1/32		DECIMAL ± 0.005		PART NO.	
FRACTIONAL ± 1/32		DECIMAL ± 0.005		PD3_PD7-0000	
FRACTIONAL ± 1/32		DECIMAL ± 0.005		DRAWING NOT TO SCALE	



**UNLESS OTHERWISE SPECIFIED:**

**PROPRIETARY AND CONFIDENTIAL**

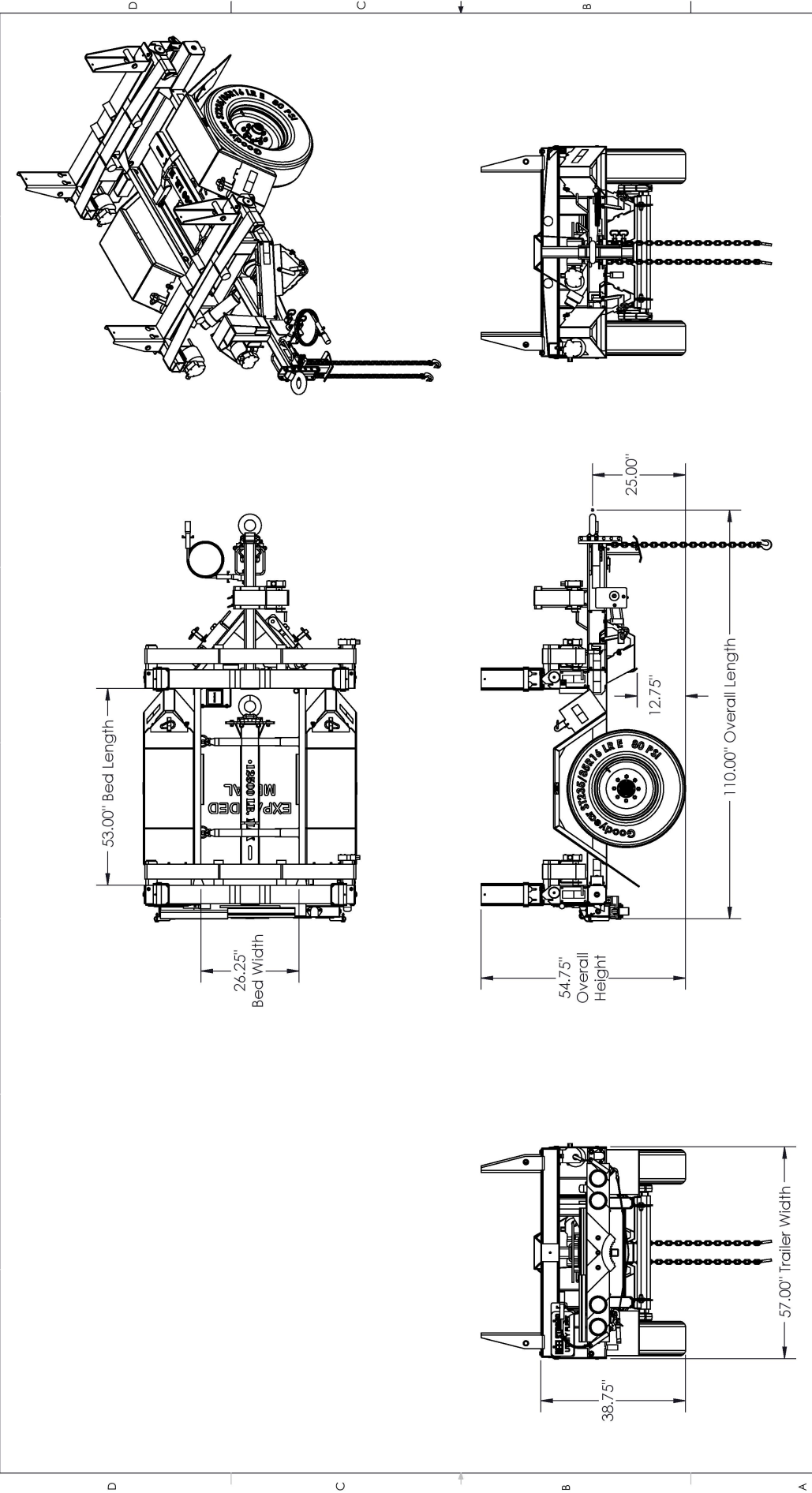
THE INFORMATION CONTAINED HEREIN IS THE SOLE PROPERTY OF REELSTRONG UTILITY FLEET, INC. AND IS NOT TO BE DISCLOSED OR REPRODUCED IN ANY MANNER WITHOUT THE WRITTEN PERMISSION OF ReelStrong, Inc. IS PROHIBITED.

**DIMENSIONS ARE IN INCHES**

**TOLERANCE LIMITS:**

FINISH: ± 0.005  
DECIMAL: ± 0.010  
DECIMAL: ± 0.005

1 2 3 4 5 6 7 8



UNLESS OTHERWISE SPECIFIED:		REELSTRONG UTILITY FLEET		TITLE: PD7N	
PROPERTY AND CONFIDENTIAL		MATERIAL:		FINISH:	
DIMENSIONS ARE IN INCHES		TOLERANCE UNITS		APPLY FINISH:	
THE INFORMATION CONTAINED HEREIN IS THE SOLE PROPERTY OF REELSTRONG, INC. ANY REPRODUCTION OR TRANSMISSION OF THIS INFORMATION WITHOUT THE WRITTEN PERMISSION OF REELSTRONG, INC. IS PROHIBITED.		LBS		SHEET 1 OF 5	
TOLERANCE UNITS		DATE		DRAWING NOT TO SCALE	
ANGULAR ± 1.0°		6/14/2016		PART NO.	
DECIMAL ± 0.005				902-000000	
DECIMAL XX ± 0.010					
DECIMAL XXX ± 0.005					