

REELSTRONG[®]

UTILITY FLEET

SP-ST STICK / PIPE TRAILER SPECS



EXCLUSIVE STANDARD ADDED VALUE:

- Industry Leading Safety, Ease of Use, Low Maintenance and Durability
- No-Bind EZ Slide Stanchions
- Low Center of Gravity
- Front Bulkhead to Easily Load and Place Material
- Heavy Duty Winch Straps
- Great Price

BUILT FOR SAFETY. BUILT FOR SPEED. BUILT TO LAST.

CAPACITIES

- SP-ST14: 16,100 lbs. GVWR @ 15% Tongue Weight
- SP-ST20: 22,100 lbs. GVWR @ 15% Tongue Weight

AXLES

- SP-ST14: Tandem 7K lbs. Torsion
- SP-ST20: Tandem 10K lbs. Sprung

WHEELS

- SP-ST14: (4) 16 x 6K / 8 on 6.5 BC w/ Zeroset
- SP-ST20: (4) 17.50 x 6.75 HC / 8 on 6.5 BC w/ 0.19 Inset

TIRES

- SP-ST14: (4) ST-235/85R16 LR-E Tires
- SP-ST20: (4) ST-215/75R17 LR-H Tires

BRAKES

- SP-ST14: 12.00" x 2.00" Electric w/ Safety Breakaway Kit
- SP-ST20: 12.25" x 3.38" Electric w/ Safety Breakaway Kit

PAYLOAD: ALL FINAL PAYLOADS BASED ON CHOSEN MODEL AND OPTIONS

PAYLOAD:

- SP-ST14: 10,250 lbs. Approx.
- SP-ST20: 15,750 lbs. Approx.

OVERALL LENGTH: 558"

OVERALL WIDTH: 96"

CURB WEIGHT:

- SP-ST14: 5,850 lbs. Approx.
- SP-ST20: 6,350 lbs. Approx.

Actual Trailer Weight will Vary with Options & Finishes Chosen.

POLE SEAT HEIGHT: 34"

STANDARD FEATURES

- No-Bind EZ Slide Stanchions
- Oil Bath Hubs (Greaseable Option All)
- Electric Brakes
- Wheel Chock Holders
- Heavy Duty Winch Straps

STANDARD FEATURES (cont.)

- Front Bulkhead to Easily Load and Place Material
- Low Center of Gravity

POLE SECUREMENT

- Pole Rests: 5" H Beam
- Winch Binders, Ratcheting Breaker Bar and Bar Pocket

STANDARD TRAILER BODY

- Heavy Duty 12" Channel Frame
- Heavy Duty 6" Channel Crossmembers
- 7-Position Adjustable Hitch
- $\frac{3}{8}$ " X 36" GR70 Yellow Zinc Safety Chains with Hooks
- 12,000 lbs. Static Front Jack w/ Spring Return

WIRING

- DOT / ICC Approved LED Lights and Conspicuity Reflective Tape
- Internal Cat Track Protects Wiring (and air brakes if applicable)
- Removable Rear Access Door for Cat Track and Wiring
- Sealed Beam, Rubber Mounted Stop, Turn, Tail and Marker Lights
- 100% Sealed Heat-Shrunked Wiring Connections w/ Full Loom
- Breakaway Kit with Absorbed Glass Mat (AGM) Battery

PAINT

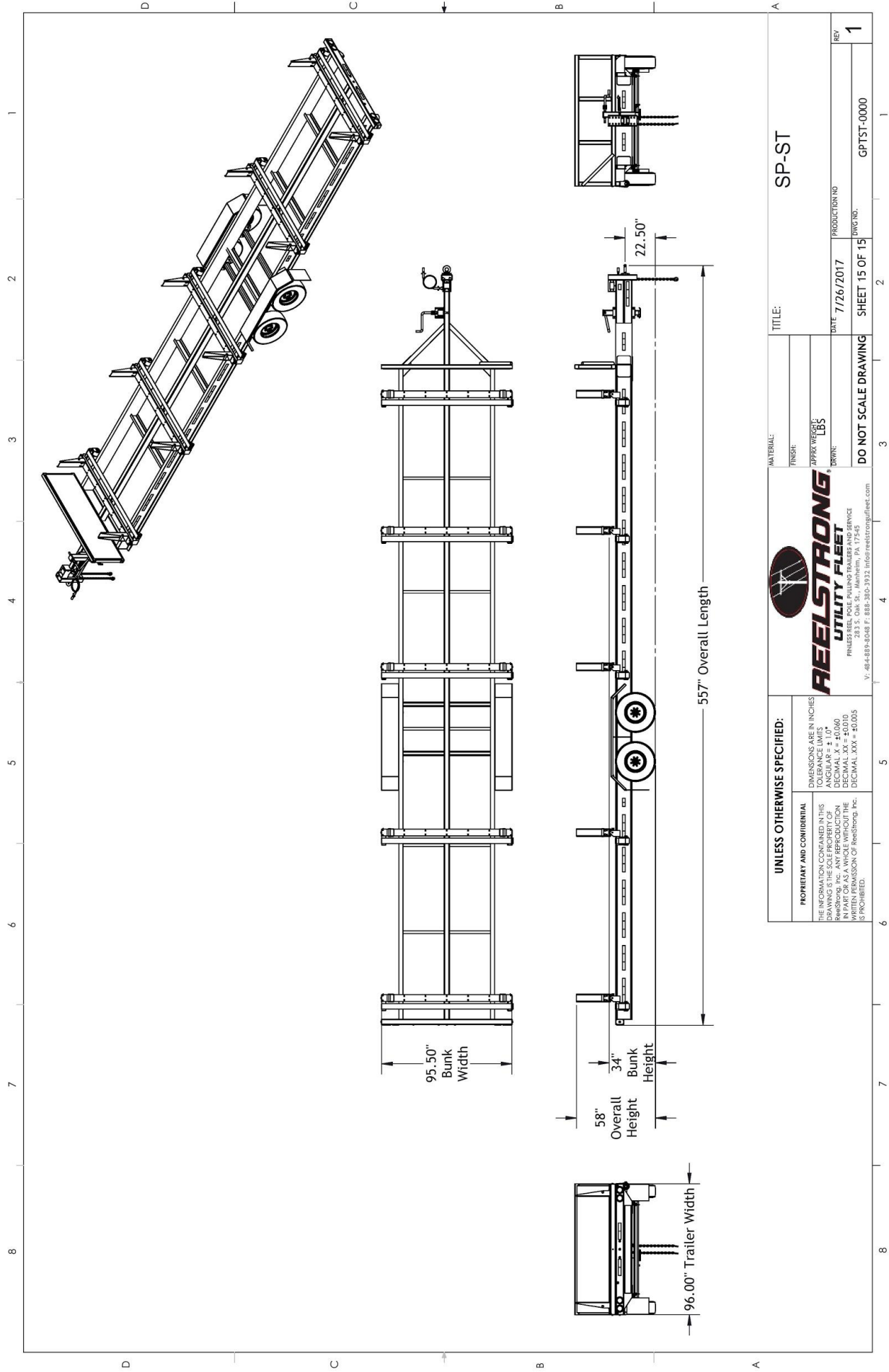
- I.M.P.A.C.T Intense Metal pH Acid Cleaning Technology
- Hydrofluoric, Sulfuric, Phosphoric ACID Blend Cleaning Preparation
(Re-used sandblasting material can impregnate metals with oil)
- Seams Caulked
- Rust Preventative 2-Part Epoxy Primer
- Standard Colors: Red, Black, White and CAT Yellow

OPTIONS

- 10-Year Galvanized Structural Warranty (2-Year Painted)
- 10K-HD / 15K / 20K Axles Available w/ Air Brakes
- Anti-Lock Brakes (ABS)
- 16" Long 6-Bolt Hitch Extension (w/ 52" Safety Chains and Breakaway Cable Extension)
- 3" Lunette Eye
- UHMW Composite Bunk Pads w/ Countersunk Fasteners
- Wiring Connections Soldered and Sealed w/ Heat Shrink Tubing
- Plug-and-Play Sealco Wiring Harness
- Wheel Chocks: Rubber or All Weather Galvanized Grip Strut
- Spare Tire and Mount

OPTIONS (cont.)

- Solar Charged Breakaway Kit
- Truck-Lite Lighting
- Lug Nut Indicators
- Rear Extending Gas Pipe Trailer using SECURELOCK™ Technology (SP-RE)
 - Bed Length Extends from 33' Retracted to 40' Extended
 - Overall Length: 45.3' (Extended)
 - Overall Width: 96" & 102" Available
 - Same Capacities are Available



UNLESS OTHERWISE SPECIFIED: DIMENSIONS ARE IN INCHES TOLERANCE LIMITS: DECIMAL .X = ±0.040 DECIMAL .XX = ±0.015 DECIMAL .XXX = ±0.005		PROPRIETARY AND CONFIDENTIAL THE INFORMATION CONTAINED IN THIS DRAWING IS THE SOLE PROPERTY OF REELSTRONG, INC. ANY REPRODUCTION OR TRANSMISSION OF THIS DRAWING WITHOUT THE WRITTEN PERMISSION OF REELSTRONG, INC. IS PROHIBITED.	
REELSTRONG[®] UTILITY FLEET <small>PHILADELPHIA REEL POLE PULLING TRAILERS AND SERVICE 1000 W. 10TH STREET, PHILADELPHIA, PA 19106 V: 484-889-6048 F: 484-362-3932 EMAIL: SALES@REELSTRONG.COM</small>		DO NOT SCALE DRAWING	
MATERIAL: _____ FINISH: _____ APPROX WEIGHT: 185 DRAWN: _____		TITLE: SP-ST DATE: 7/26/2017 PRODUCTION NO: _____ DRAWING NO: GPTST-0000	
SHEET 15 OF 15		REV: 1	