



## RS20 POWERLOCK™ REEL STAND SPECS



### EXCLUSIVE STANDARD ADDED VALUE:

- POWERLOCK™ Technology Provides Industry Leading Safety, Ease of Use, Low Maintenance and Durability.
  - SAFETY and Peace of Mind
  - No Pins, Cotters, or Lanyards that Secure the Reel Arbor (which is the most critical safety point).
  - Faster Reel loading, Unloading, and Deployment Reduces Labor Costs and Fatigue on Workers.
- No Tools Required to Replace Reels

***BUILT FOR SAFETY. BUILT FOR SPEED. BUILT TO LAST.***

## **MAX REEL CAPACITY**

- Height: 108"
- Width: 67"
- Weight: 20,000 lbs.

**ARBOR BAR:** 5.00" w/ Lift & Lock Collars (Optional Reel Adapters Available for Larger Arbor Holes)

## **DIMENSIONS**

- Length: 98"
- Width: 88"
- Height: 68" w/o Reel
- Weight: 2,200 lbs.

## **STANDARD FEATURES**

- POWERLOCK™ Technology Provides Industry Leading Safety, Ease of Use, Low Maintenance and Durability.
- Arbor Assembly Lifts Out of Brake Dog w/o Side-Shifting the Arbor to Disengage
- No Tools Required to Replace Reels
- Ground Lug: Copper Alloy Bolted to Frame

## **CONSTRUCTION**

- Reinforced Truss on Rectangular Base Frame
- Steel Tube Frame Continuously Welded
- D-Rings Located on Each Corner for Tie Down

## **PAINT**

- I.M.P.A.C.T Intense Metal pH Acid Cleaning Technology
- Hydrofluoric, Sulfuric, Phosphoric ACID Blend Cleaning Preparation (Re-used sandblasting material can impregnate metals with oil)
- Rust Preventative 2-Part Epoxy Primer
- Standard Colors: Red, Black, White and CAT Yellow

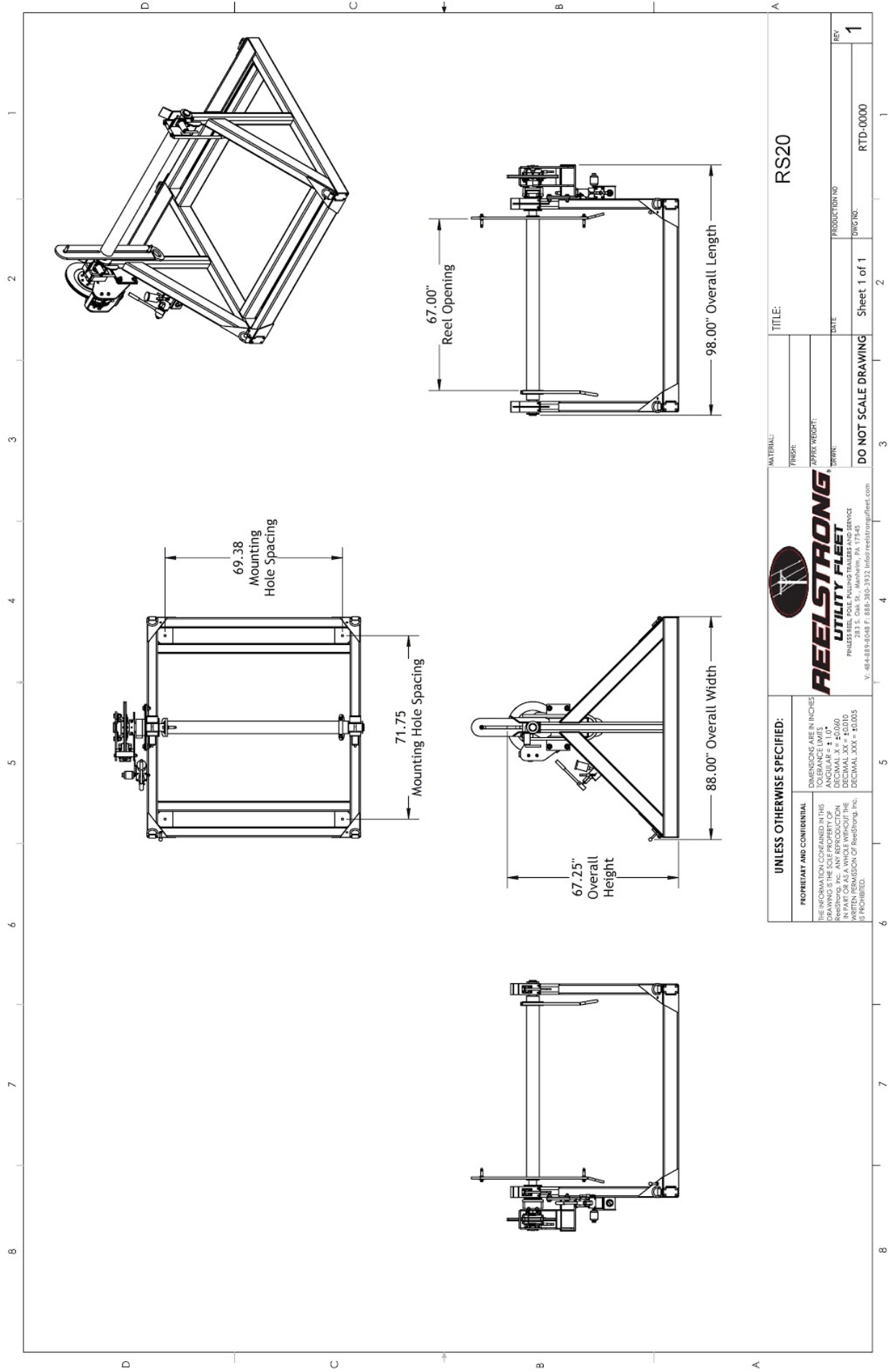
## **OPTIONS**

- 10-Year Galvanized Structural Warranty (2-Year Painted)
- 20" Bronze Alloy Ventilated Reel Brake
- Hydraulic Hand Pump, Accumulator, and Pressure Gauge. Smooth Operation and Consistent Brake Pressure. (Pairs with the 20" Reel Brake)
- 13 HP Honda Engine Hydraulic Power Unit
- Engine Cover
- 3,300 ft/lbs Hydraulic Take-up Retriever (Shown with Capstan & Adapter)
- 2-7/16" Universal Adapter for Capstan and Power Reel Attachments
- 7 Inch General Purpose Capstan

*—All specifications / designs are subject to change without notice - All GVWR and reel capacities are de-rateable to your needs.*

**OPTIONS (cont.)**

- Collapsible Power Reel
- Auxiliary Hydraulic Quick-Connect Ports
- Reel Adapters Available for Larger Reel Arbor Holes
- Aluminum or Steel Toolbox
- Wiring Connections Soldered and Sealed w/ Heat Shrink Tubing
- Strobe Warning Lights
- All Stainless Steel Fasteners (½" and under)



UNLESS OTHERWISE SPECIFIED:		DIMENSIONS ARE IN INCHES TOLERANCE LIMITS ANGULAR = ± 1.0° DECIMAL .X = ±0.060 FRACTIONS 1/16" AND SMALLER = ±0.015 DECIMAL .XXX = ±0.005	
PROPRIETARY AND CONFIDENTIAL THE INFORMATION CONTAINED IN THIS DRAWING IS THE SOLE PROPERTY OF ReelStrong, Inc. ANY REPRODUCTION OR TRANSMISSION OF THIS INFORMATION WITHOUT THE WRITTEN PERMISSION OF ReelStrong, Inc. IS PROHIBITED.		 <b>REELSTRONG<sup>®</sup></b> UTILITY FLEET PULLERS REEL, POLE, PULING TRAILERS AND SERVICE EQUIPMENT 17745 V. 484-889-6048 F. 888-363-3932 <a href="mailto:info@reelstrong.com">info@reelstrong.com</a>	
MATERIAL:		TITLE: RS20	
FINISH:		DATE:	
APPROX WEIGHT:		DRAWING NO:	
DRAWING:		PRODUCTION NO:	
DO NOT SCALE DRAWING		Sheet 1 of 1	
		DWG NO: RTD-0000	
		REV: 1	