



CP-SL COIL PIPE SELF-LOADING TRAILER SPECS



EXCLUSIVE STANDARD ADDED VALUE:

- Industry Leading Safety, Ease of Use, Low Maintenance and Durability.
- Self-Loading Feature to Easily Load Coil / Pipe
- Floating Spindle Turret Allows for Adjustability from 30" ID to 80"
- Turntable Holds Coils with a Height up to 48"
- Brake Easily Engages by Pulling a Hand Lever
- Removable Outside Diameter Posts
- Low Center of Gravity

BUILT FOR SAFETY. BUILT FOR SPEED. BUILT TO LAST.

CAPACITIES

- CP-SL1.6: 4,050 lbs. GVWR

AXLES

- CP-SL1.6: 3.5K lbs. Torsion

WHEELS (per axle)

- CP-SL1.6: (2) 15 x 6JJ / 5 on 4.5 BC w/ Zeroset

TIRES (per axle)

- CP-SL1.6: (2) ST-205/75R15 LR-C Tires

BRAKES (per axle)

- CP-SL1.6: 10.00" x 2.25" Electric w/ Safety Breakaway Kit

PAYLOAD: ALL FINAL PAYLOADS BASED ON CHOSEN MODEL AND OPTIONS

COIL WEIGHT (PAYLOAD):

- CP-SL1.6: 1,600 lbs. Approx.

COIL HEIGHT (from turntable): 48"

COIL DIAMETER: Fabricated ID Spokes with "Floating" Spindle 30"-80" ID Adjustability

OVERALL LENGTH: 167" Approx.

OVERALL WIDTH: 96" Approx.

OVERALL WEIGHT: Actual Trailer Weight will Vary with Options & Finishes Chosen.

STANDARD FEATURES

- Industry Leading Safety, Ease of Use, Low Maintenance and Durability.
- Oil Bath Hubs (Greaseable Option All)
- Electric Brakes
- Wheel Chock Holders
- (4) Removable 2-1/2" x 2-1/2" Vertical Outside Diameter Posts
- Floating Spindle Turret Allows for Adjustability from 30" ID to 80"
- Turntable Holds Coils with a Height up to 48"
- Brake Easily Engages by Pulling a Hand Lever
- Self-Loading Feature to Easily Load Coil / Pipe
- EZ Pump Enerpac Vertical Hand Pump (Self-Loading)
- Heavy Duty 5" Channel Frame

STANDARD TRAILER BODY

- 5-Position Adjustable Hitch
- 3/8" X 36" GR70 Yellow Zinc Safety Chains with Hooks
- 8,000 lbs. Static Front Jack
- Fenders: 1/8" Plate
- Turntable Cage

WIRING

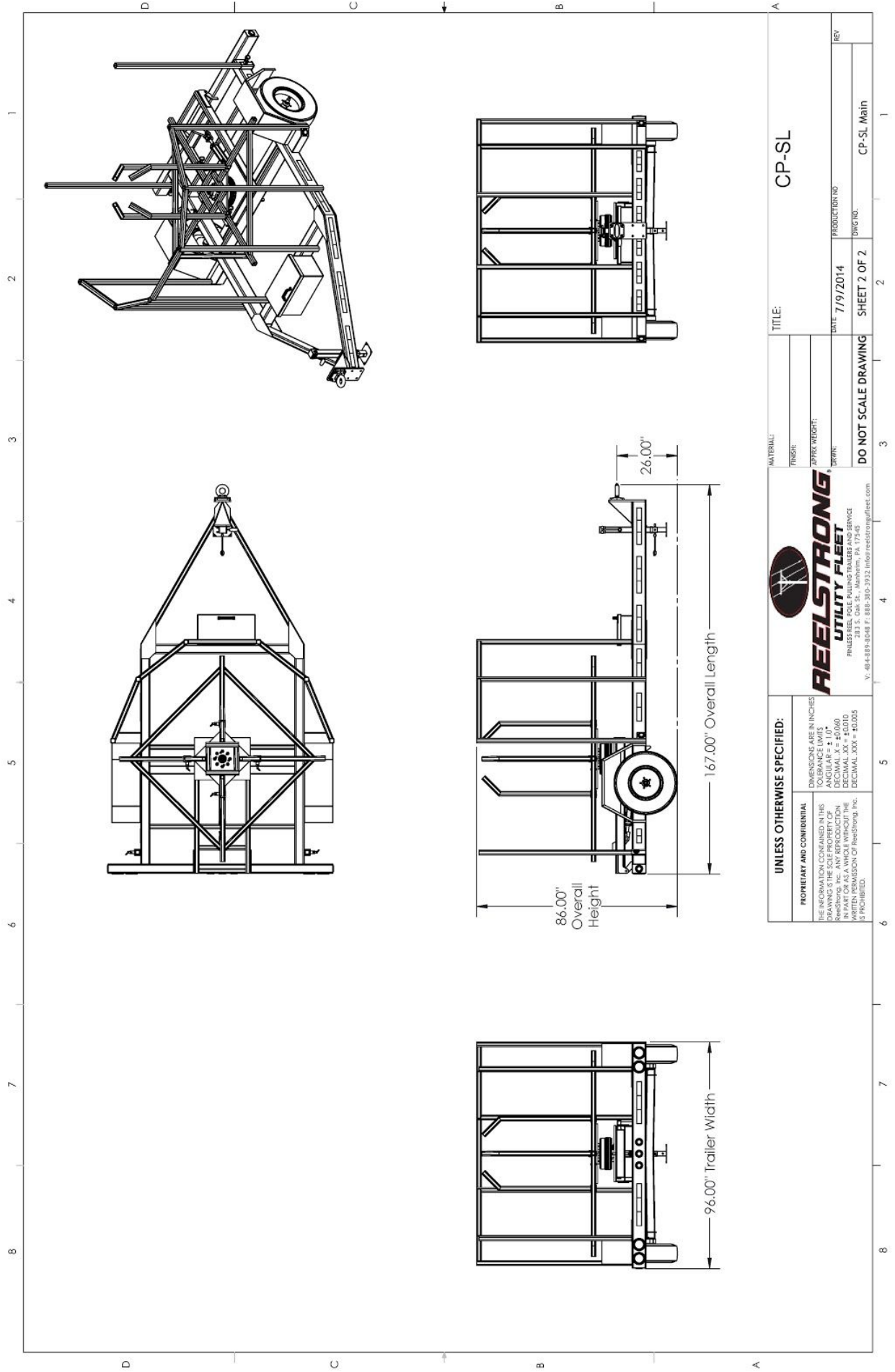
- DOT/ICC Approved LED Lights and Conspicuity Reflective Tape
- FMVSS / CMVSS Standard 108 LED Lighting
- Sealed Beam, Rubber Mounted Stop, Turn, Tail and Marker Lights
- Plug-and-Play Sealco Wiring Harness
- Breakaway Kit with Absorbed Glass Mat (AGM) Battery

PAINT

- I.M.P.A.C.T Intense Metal pH Acid Cleaning Technology
- Hydrofluoric, Sulfuric, Phosphoric ACID Blend Cleaning Preparation
(Re-used sandblasting material can impregnate metals with oil)
- Seams Caulked
- Rust Preventative 2-Part Epoxy Primer
- Standard Colors: Red, Black, White and CAT Yellow

OPTIONS

- 10-Year Galvanized Structural Warranty (2-Year Painted)
- Aluminum or Steel Toolbox
- Wiring Connections Soldered and Sealed w/ Heat Shrink Tubing
- Wheel Chocks: Rubber or All Weather Galvanized Grip Strut
- Spare Tire and Mount
- Strobe Warning Lights
- All Stainless Steel Fasteners (1/2" and under)
- 12-Volt Electric over Hydraulic Power for Self-Loading
- Line Tamer / Pipe Straightener w/ Radial Articulating Arm



UNLESS OTHERWISE SPECIFIED:		REELSTRONG[®] UTILITY FLEET <small>FRAMES REEL POLE PULLING TRAILERS AND SERVICE 1000 W. MARKET ST. SUITE 100 PHILADELPHIA, PA 19106 V. 484-889-6048 F. 888-383-3932 info@reelstrongutilityfleet.com</small>		CP-SL	
PROPRIETARY AND CONFIDENTIAL <small>THE INFORMATION CONTAINED IN THIS DRAWING IS THE SOLE PROPERTY OF REELSTRONG, INC. ANY REPRODUCTION OR TRANSMISSION OF THIS DRAWING WITHOUT THE WRITTEN PERMISSION OF REELSTRONG, INC. IS PROHIBITED.</small>		<small>DIMENSIONS ARE IN INCHES TOLERANCE LIMITS: ANGULAR = ± 1.0° DECIMAL .X = ±0.060 DECIMAL .XX = ±0.015 DECIMAL .XXX = ±0.005</small>		MATERIAL: _____ FINISH: _____ APPROX WEIGHT: _____ DRAWN: _____	
DATE: 7/19/2014		PRODUCTION NO: _____		REV: _____	
DO NOT SCALE DRAWING		SHEET 2 OF 2		CP-SL Main	