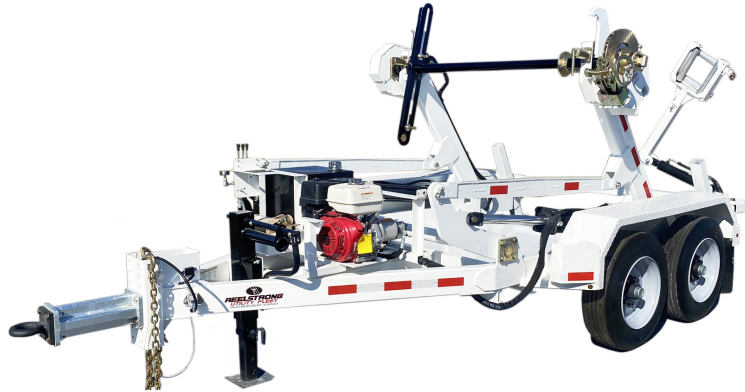


REELSTRONG®

UTILITY FLEET

CLD POWERLOCK™ REEL TRAILER SPECS



LOWEST TOTAL COST OF OWNERSHIP (TCO) From:

- **LIFETIME WARRANTY PINLESS POWERLOCK™** Reel Bar Securement
- No Pins or Cotters to Secure Reel Bar (*most critical safety point*).
- Fastest, Safest Loading, Unloading and Deployment Reduces Labor .
- Yellow Zinc Electro-Plated and Stainless Precision Machined Components
- **PRACTICAL:** No Expensive, Unnecessary Bronze Components, yet we Don't Cut Corners and Provide Premium, Heavy Duty, Top-Quality Latches, Hardware, Fittings and Components.

BUILT FOR SAFETY. BUILT FOR SPEED. *BUILT TO LAST.*

CAPACITIES

- CLD6: 9,200 lbs. GVWR @ 15% Tongue Weight
- CLD14: 22,100 lbs. GVWR @ 15% Tongue Weight
- CLD20: 26,600 lbs. GVWR @ 12% Tongue Weight

AXLES

- CLD6: Single 8K lbs. Torsion
- CLD14: Tandem 10K lbs. Torsion
- CLD20: Triple 8K lbs. Torsion

WHEELS

- CLD6: (2) 17.5 x 6.75 HC / 8 on 6.5 BC w/ 0.19 Inset
- CLD14: (4) 17.5 x 6.75 HC / 8 on 6.5 BC w/ 0.19 Inset
- CLD20: (6) 17.5 x 6.75 HC / 8 on 6.5 BC w/ 0.19 Inset

TIRES

- CLD6: (2) 215/75R17.5 LR-H Tires
- CLD14: (4) 215/75R17.5 LR-H Tires
- CLD20: (6) 215/75R17.5 LR-H Tires

BRAKES

- CLD6: 12.25" x 3.38" Electric w/ Safety Breakaway Kit
- CLD14: 12.25" x 3.38" Electric w/ Safety Breakaway Kit
- CLD20: 12.25" x 3.38" Electric w/ Safety Breakaway Kit

PAYLOAD: ALL FINAL PAYLOADS BASED ON CHOSEN MODEL AND OPTIONS

REEL WEIGHT (PAYLOAD)

- CLD6: 6,000 lbs. Approx.
- CLD14: 14,000 lbs. Approx.
- CLD20: 20,000 lbs. Approx.

REEL DIAMETER:

- CLD6: 96"
- CLD14: 96"
- CLD20: 120"

REEL WIDTH: 60" Max

REEL SHAFT DIAMETER:

- CLD6: 2.50"
- CLD14: 3"

REEL SHAFT DIAMETER (cont.):

- CLD20: 3"

OVERALL LENGTH:

- CLD6: 134.00"
- CLD14: 182.00"
- CLD20: 199.00"

OVERALL WIDTH: 102"**OVERALL WEIGHT:**

- CLD6: 3,050 lbs. Approx.
- CLD14: 5,050 lbs. Approx.
- CLD20: 6,200 lbs. Approx.

Actual Trailer Weight will Vary with Options & Finishes Chosen.

STANDARD FEATURES

- **LIFETIME WARRANTY PINLESS AUTOLOCK™**
- Oil Bath Hubs (Greaseable Option All)
- Electric Brakes
- Wheel Chock Holders
- Dexter Axles
- OPEN TOP, "NON ENCAPSULATED" NYLATRON BEARING SADDLE (low-coefficient of friction). OPEN TOP = LESS FRICTION/LOW MAINTENANCE and EASIER PAY-OUT. (Haven't Replaced a Saddle due to Wear in 13 Years)
- Wheel Chock Holders
- 6D-Rings Front, Center and Rear for Cargo / Transformers (CLD6/CLD14)
- Electric Over Hydraulic (CLD6)

STANDARD TRAILER BODY

- 6" X 3" X ¼" Frame (CLD6/CLD14)
- 8" X 3" X ¼" Frame (CLD20)
- 6-Position Adjustable Hitch
- ¾" X 36" GR70 Yellow Zinc Safety Chains with Hooks
- ½" X 36" GR70 Yellow Zinc Safety Chains with Hooks (CLD20)
- Standard Cargo Area (CLD6/CLD14)
- 8,000 lbs. Static Front Jack (CLD6)
- 12,000 lbs. Static Front Jack w/ Spring Return (CLD14/CLD20)
- Ground Lug: Copper Alloy Star Washer Bolted to Frame (Welded Optional)
- Fenders: ⅛" Fabricated Diamond Plate
- Quick Deploy Outriggers (no loose pins) (CLD20)
- DOT Reflective Conspicuity Tape

LIGHTS/WIRING

- DOT / ICC-- FMVSS / CMVSS Approved LED ULTRA- HIGH VISIBILITY 180 DEGREE BULLET Marker and Clearance Lights
- LED Sealed Beam Rubber Mounted Stop, Turn, Tail and Marker Lights
- 100% Sealed Heat-Shrunked Wiring Connections w/ Full Loom
- Breakaway Kit with Absorbed Glass Mat (AGM) Battery
- FULLY PROTECTED 7 or 6 Way Female Plug acts as Junction Box Recessed in FRAME RAIL. No Easily Damaged Plastic Junction Boxes!

PAINT

- Intense Metal pH Acid Surface Prep
(Superior to sandblasting that can infuse metal w/ oil)
- Seams Caulked
- Rust Preventative 2-Part Epoxy Primer
- Two-Part Polyurethane Topcoats (2 topcoats)
- Standard Colors: White and CAT Yellow (Custom Available)

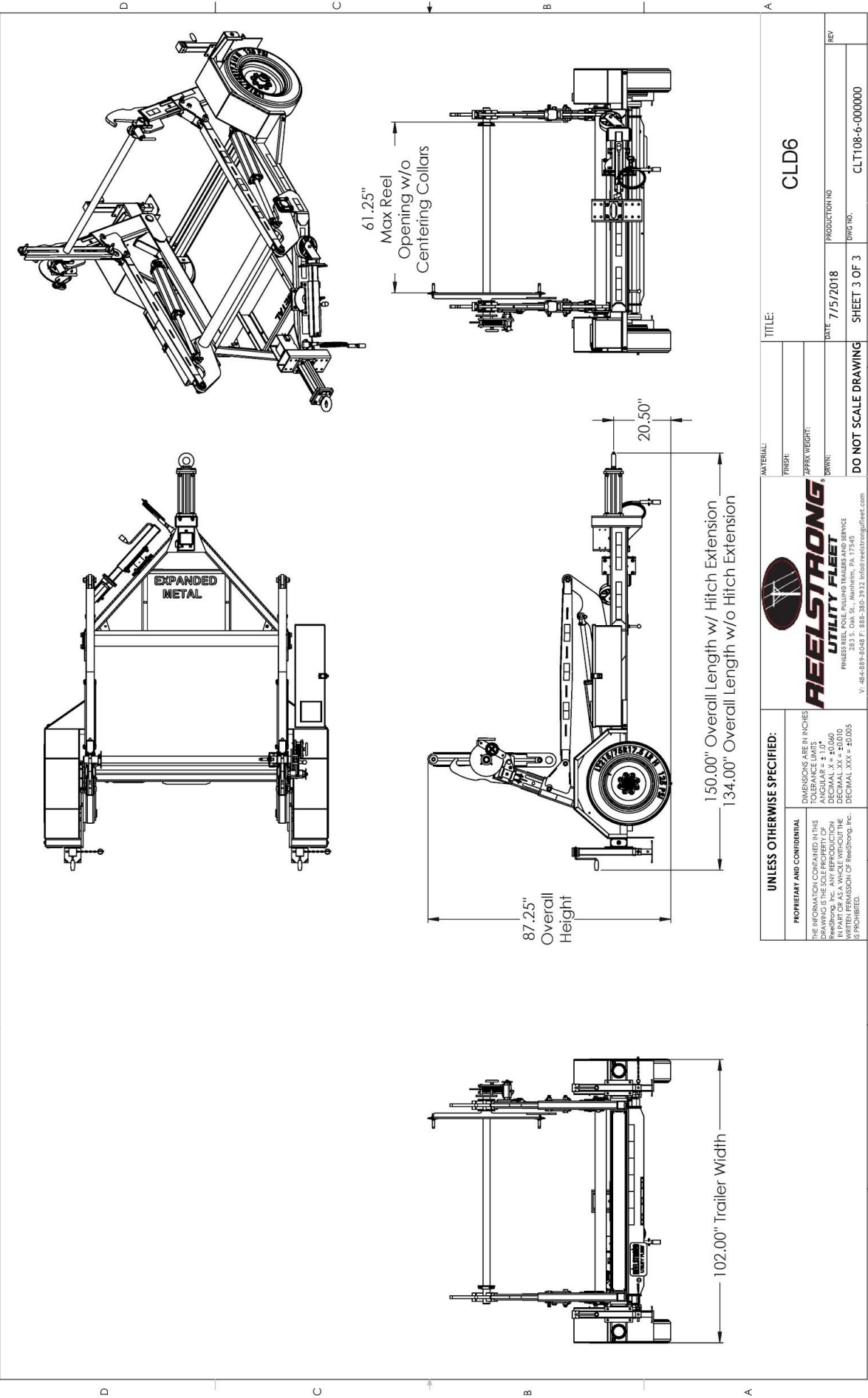
OPTIONS

- 13 HP HONDA Engine Hydraulic Power Pack Comes STANDARD w/ ENGINE COVER, 15 Gallon Reservoir, Replaceable Oil Filter, Pressure Gauge and Solar Fade Resistant Plastic Control Placard. (Electric Start Optional)
- Ten (10) Year Galvanized Structural Warranty (2-Year Painted)
- Aluminum Engine Cover
- 16" Bronze Alloy TRU-STOP Ventilated Reel Brake
- 3,300 ft/lbs Torque Hydraulic Take-up Retriever. (Motor Spooled w/ Reel Brake ILO Cross-Over Relief Valve for Smooth Instant Reel Stoppage)
- 2-7/16" Universal Adapter for Capstan, Collapsible Reel or Slip-Clutch Fiber-Optic Reels
- 7 Inch General Purpose Capstan
- Collapsible Power Reel
- Slip-Clutch Fiber-Optic Pulling Capstan
- Cable Rewind Leveler
- Rotating Arbor Ground
- Aluminum or Stainless Toolbox
- Air Brakes w/ ABS
- 16" Long 6-Bolt Hitch Extension (w/ 52" Safety Chains and Breakaway Cable Extension)
- 3" Lunette Eye
- Wiring Connections Soldered and Sealed w/ Heat Shrink Tubing
- Plug-and-Play Sealco Wiring Harness
- **Wheel Chocks:** Rubber or All Weather Galvanized Grip Strut
- Spare Tire and Mount
- Solar Charged Breakaway Kit
- 12" Caster Wheel for Tongue Jack

OPTIONS (cont.)

- Strobe Warning Lights
- All Stainless Steel Fasteners (½" and under)
- Auxiliary Hydraulic Quick-Connect Ports
- Various Trailer Light Plugs (Customer Choice)
- Custom Paint
- Custom Specification
- Truck-Lite Lighting
- Lug Nut Indicators

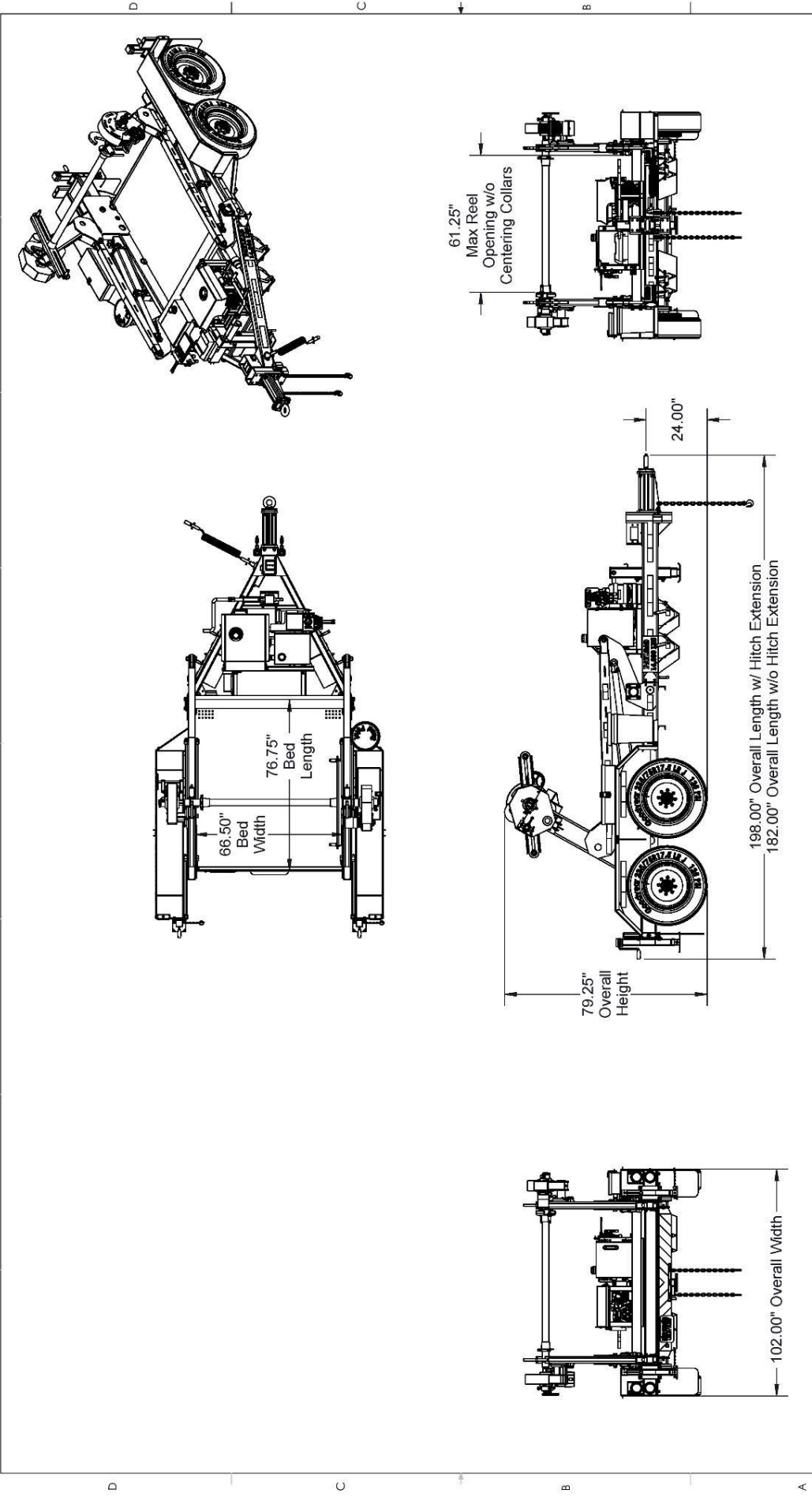
1 2 3 4 5 6 7 8



UNLESS OTHERWISE SPECIFIED:		REELSTRONG [®] UTILITY FLEET		TITLE: CLD6	
PROPRIETARY AND CONFIDENTIAL	DIMENSIONS ARE IN INCHES	MATERIAL:		FINISH:	
THE INFORMATION CONTAINED IN THIS DRAWING IS THE SOLE PROPERTY OF REELSTRONG, INC. ANY REUSE OR REPRODUCTION IN PART OR AS A WHOLE WITHOUT THE WRITTEN PERMISSION OF REELSTRONG, INC. IS PROHIBITED.	TOLERANCE LIMITS	APPROX WEIGHT:		DATE: 7/5/2018	
	ANGULAR ± 1.0°	DRWN:		PRODUCTION NO:	
	LINEAR ± 0.005			DWG NO: CLT108-6-000000	
	DECIMAL .XX ± 0.010			SHEET 3 OF 3	
	DECIMAL .XXX ± 0.005			REV	

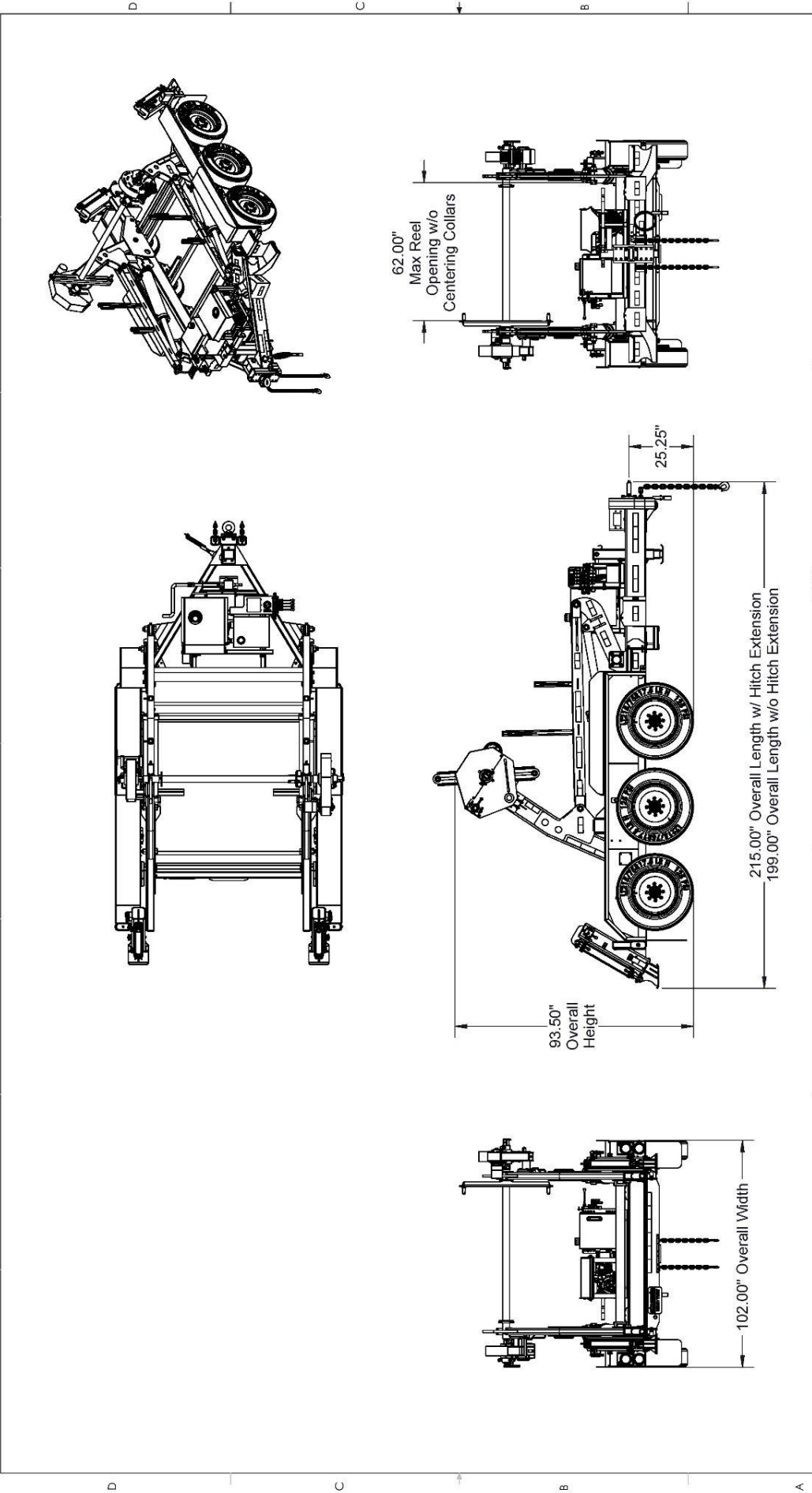
REELSTRONG[®]
UTILITY FLEET
PHILADELPHIA, PA 19104
V: 484-889-8048 F: 888-380-3932 info@reelstrongfleet.com


1 2 3 4 5 6 7 8



UNLESS OTHERWISE SPECIFIED:		TITLE:	
PROPERTY AND CONFIDENTIAL		CLD14	
DIMENSIONS ARE IN INCHES		DATE	
TOLERANCE LIMITS		7/5/2018	
ANGULAR ± 1.0°		PART NO.	
LINEAR ± 0.005		205-000000	
DECIMAL XX ± 0.010		DRAWING NOT TO SCALE	
DECIMAL XXX ± 0.005		SHEET 5 OF 5	
WRITTEN PERMISSION OF Reel Strong Inc.		MATERIAL:	
IS PROHIBITED.		FINISH:	
		LBS	
		APPROVED BY:	
		REEL STRONG UTILITY FLEET	
		PUNISH REEL, POLICE PULLING COLLARS AND SERVICE	
		V: 404-889-8048 F: 888-300-3932 info@reelstrongfleet.com	

8 7 6 5 4 3 2 1



UNLESS OTHERWISE SPECIFIED:	 REELSTRONG UTILITY FLEET 233 S. Oak St., Manheim, PA 17345 V: 664-889-8048 F: 889-393-3932 info@reelstrongllc.com	TITLE: CLD20	
		MATERIAL:	
		FINISH:	Galvanized
		WEIGHT:	LBS
		SHEET 4 OF 4	
		DRAWING NOT TO SCALE	
PROPRIETARY AND CONFIDENTIAL DIMENSIONS ARE IN INCHES TOLERANCE UNITS FRACTIONS DECIMAL .XX = ±0.010 DECIMAL .XXX = ±0.005	THE INFORMATION CONTAINED HEREIN DRAWING IS THE SOLE PROPERTY OF ReelStrong, Inc. ANY REPRODUCTION OR TRANSMISSION OF THIS DRAWING WITHOUT THE WRITTEN PERMISSION OF ReelStrong, Inc. IS PROHIBITED.		

REELSTRONG
UTILITY FLEET
283 S. Oak St., Mahanwah, PA 17845
V: 484-889-8048 F: 888-380-3932 info@reelstrongfleet.com