



## CP-SL COIL PIPE SELF-LOADING TRAILER SPECS



### EXCLUSIVE STANDARD ADDED VALUE:

- Industry Leading Safety, Ease of Use, Low Maintenance and Durability.
- Self-Loading Feature to Easily Load Coil / Pipe
- Floating Spindle Turret Allows for Adjustability from 30" ID to 68" ID (90" OD Max.)
- Turntable Holds Coils with a Height up to 50"
- Turret Brake Easily Engages by Pulling a Hand Lever
- (2) Removable Outside Diameter Posts
- Low Center of Gravity

**BUILT FOR SAFETY. BUILT FOR SPEED. BUILT TO LAST.**

## **CAPACITIES**

- CP-SL3.4: 5,980 lbs. GVWR

## **AXLES**

- CP-SL3.4: 5.2K lbs. Torsion

## **WHEELS**

- CP-SL3.4: (2) 16 x 6K / 6 on 5.5 BC w/ Zeroset

## **TIRES**

- CP-SL3.4: (2) LT235/85R16 LR-E Tires

## **BRAKES**

- CP-SL3.4: 12.00" x 2.00" Electric w/ Safety Breakaway Kit

## **PAYLOAD: ALL FINAL PAYLOADS BASED ON CHOSEN MODEL AND OPTIONS**

### **COIL WEIGHT (PAYLOAD)**

- CP-SL3.4: 3,400 lbs. Approx.

**COIL HEIGHT (from turntable): 50"**

**COIL DIAMETER:** 30" to 68" ID Adjustability (90" OD Max)

**OVERALL LENGTH:** 162.50" Approx.

**OVERALL WIDTH:** 96" Approx.

**OVERALL WEIGHT:** Actual Trailer Weight will Vary with Options & Finishes Chosen.

## **STANDARD FEATURES**

- Industry Leading Safety, Ease of Use, Low Maintenance and Durability.
- Oil Bath Hubs (Greaseable Option All)
- Electric Brakes
- Wheel Chock Holders
- (2) Removable 2" x 2" Vertical Outside Diameter Posts
- Floating Spindle Turret Allows for Adjustability from 30" ID to 68" ID (90" OD Max)
- Turntable Holds Coils with a Height up to 50"
- Brake Easily Engages by Pulling a Hand Lever
- Self-Loading Feature to Easily Load Coil / Pipe
- EZ Pump Enerpac Vertical Hand Pump (Self-Loading)
- Heavy Duty 6.00" x 4.00" x ¼" Tube Frame

## **STANDARD TRAILER BODY**

- 6-Position Adjustable Hitch
- 3/8" X 36" GR70 Yellow Zinc Safety Chains with Hooks
- 8,000 lbs. Static Front Jack
- (2) 8,000 lbs. Static Rear Stabilizer Jacks
- Fenders: 1/8" Plate
- Turntable Cage

## **WIRING**

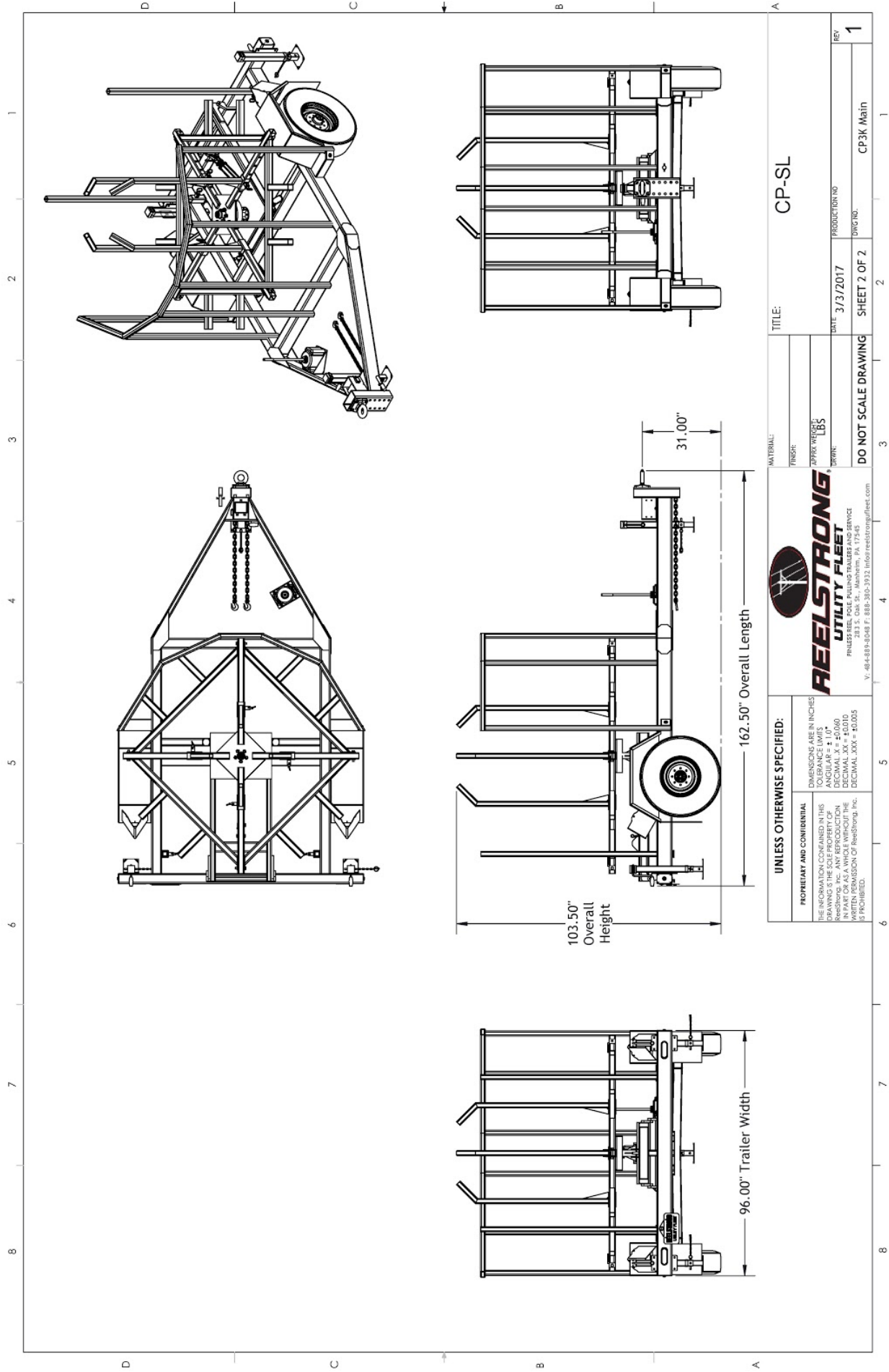
- DOT / ICC Approved LED Lights and Conspicuity Reflective Tape
- FMVSS / CMVSS Standard 108 LED Lighting
- Sealed Beam, Rubber Mounted Stop, Turn, Tail and Marker Lights
- 100% Sealed Heat-Shrunk Wiring Connections w/ Full Loom
- Breakaway Kit with Absorbed Glass Mat (AGM) Battery

## **PAINT**

- I.M.P.A.C.T Intense Metal pH Acid Cleaning Technology
- Hydrofluoric, Sulfuric, Phosphoric ACID Blend Cleaning Preparation  
(Re-used sandblasting material can impregnate metals with oil)
- Seams Caulked
- Rust Preventative 2-Part Epoxy Primer
- Standard Colors: Red, Black, White and CAT Yellow

## **OPTIONS**

- 10-Year Galvanized Structural Warranty (2-Year Painted)
- Anti-Lock Brakes (ABS)
- 3" Lunette Eye
- Aluminum or Steel Toolbox
- Wiring Connections Soldered and Sealed w/ Heat Shrink Tubing
- Plug-and-Play Sealco Wiring Harness
- Wheel Chocks: Rubber or All Weather Galvanized Grip Strut
- Spare Tire and Mount
- Solar Charged Breakaway Kit
- Strobe Warning Lights
- All Stainless Steel Fasteners (1/2" and under)
- 12-Volt Electric over Hydraulic Power for Self-Loading
- Line Tamer / Pipe Straightener w/ Radial Articulating Arm
- 16" Hitch Extension
- Truck / Trailer Electric Wiring Socket: Customer Choice
- Tracer Wire Holder
- Truck-Lite Lighting



UNLESS OTHERWISE SPECIFIED:		DIMENSIONS ARE IN INCHES	
TOLERANCE LIMITS:		TOLERANCE LIMITS:	
ANGULAR ± 1.0°		ANGULAR ± 1.0°	
DECIMAL .X ± .0050		DECIMAL .X ± .0050	
FRACTIONS 1/16 ± .0050		FRACTIONS 1/16 ± .0050	
DECIMAL .XXX ± .0005		DECIMAL .XXX ± .0005	
IS PROHIBITED.		IS PROHIBITED.	
THE INFORMATION CONTAINED IN THIS DRAWING IS THE SOLE PROPERTY OF REELSTRONG, INC. ANY REPRODUCTION OR TRANSMISSION OF THIS DRAWING WITHOUT THE WRITTEN PERMISSION OF REELSTRONG, INC. IS PROHIBITED.		REELSTRONG <sup>®</sup> UTILITY FLEET	
		FINISH: CP3K WHITE	
		MATERIAL: CP3K WHITE	
		TITLE: CP-SL	
		DATE: 3/3/2017	
		PRODUCTION NO.	
		DRAWING NO.	
		CP3K Main	
		SHEET 2 OF 2	
		REV	
		1	

**REELSTRONG<sup>®</sup>**  
**UTILITY FLEET**  
FINDERS REEL, POLE, PULPING TRAILERS AND SERVICE  
1000 W. 10TH AVE., SUITE 100, DENVER, CO 80202  
V. 484-887-6248 F. 888-303-3932 [info@reelstrong.com](mailto:info@reelstrong.com)

DO NOT SCALE DRAWING