



PL12 POWERLOCK™ STRINGING REEL TRAILER SPECS



EXCLUSIVE STANDARD ADDED VALUE:

- POWERLOCK™ Technology Provides Industry Leading Safety, Ease of Use, Low Maintenance and Durability.
 - SAFETY and Peace of Mind
 - No Pins, Cotters, or Lanyards that Secure the Reel Arbor (which is the most critical safety point).
 - Faster Reel Loading, Unloading, and Deployment Reduces Labor Costs and Fatigue on Workers.

BUILT FOR SAFETY. BUILT FOR SPEED. BUILT TO LAST.

CAPACITIES

- PL12: 22,100 lbs. GVWR @ 15% Tongue Weight
- PL12-C: 22,100 lbs. GVWR @ 15% Tongue Weight

AXLES

- PL12: Tandem 10K lbs. Sprung
- PL12-C: Tandem 10K lbs. Sprung

WHEELS

- PL12: (4) 17.5 x 6.75 HC / 8 on 6.5 BC w/ 0.19 Inset
- PL12-C: (4) 17.5 x 6.75 HC / 8 on 6.5 BC w/ 0.19 Inset

TIRES

- PL12: (4) ST-215/75R17.5 LR-H Tires
- PL12-C: (4) ST-215/75R17.5 LR-H Tires

BRAKES

- PL12: 12.25" x 3.38" Electric w/ Safety Breakaway Kit
- PL12-C: 12.25" x 3.38" Electric w/ Safety Breakaway Kit

PAYLOAD: ALL FINAL PAYLOADS BASED ON CHOSEN MODEL AND OPTIONS

REEL WEIGHT (PAYLOAD)

- PL12: 12,000 lbs. Approx.
- PL12-C: 12,000 lbs. Approx.

REEL DIAMETER: 108" Maximum

REEL WIDTH: 60" Maximum

REEL SHAFT DIAMETER: 3.00" Tube w/ Heavy Duty Lifting Lug Centering Collar

OVERALL LENGTH: 198.75" Approx.

OVERALL WIDTH: 102"

OVERALL WEIGHT: Actual Trailer Weight will Vary with Options & Finishes Chosen.

STANDARD FEATURES

- POWERLOCK™ Technology Provides Industry Leading Safety, Ease of Use, Low Maintenance and Durability.
- Oil Bath Hubs (Greaseable Option All)

—All specifications / designs are subject to change without notice - All GVWR and reel capacities are de-rateable to your needs.

STANDARD FEATURES (cont.)

- Electric Brakes
- Wheel Chock Holders

STANDARD TRAILER BODY

- Heavy Duty 6" X 4" X ¼" Frame
- 6-Position Adjustable Hitch
- ½" X 42" GR70 Yellow Zinc Safety Chains with Hooks
- 12,000 lbs. Static Front Jack w/ Spring Return
- Ground Lug: Copper Alloy Bolted to Frame
- Fenders: ⅛" Tread Plate
- (2) Rear 12,000 lbs. Static Stabilizer Jacks w/ Spring Return

WIRING

- DOT / ICC Approved LED Lights and Conspicuity Reflective Tape
- FMVSS / CMVSS Standard 108 LED Lighting
- Sealed Beam, Rubber Mounted Stop, Turn, Tail and Marker Lights
- 100% Sealed Heat-Shrunk Wiring Connections w/ Full Loom
- Breakaway Kit with Absorbed Glass Mat (AGM) Battery

PAINT

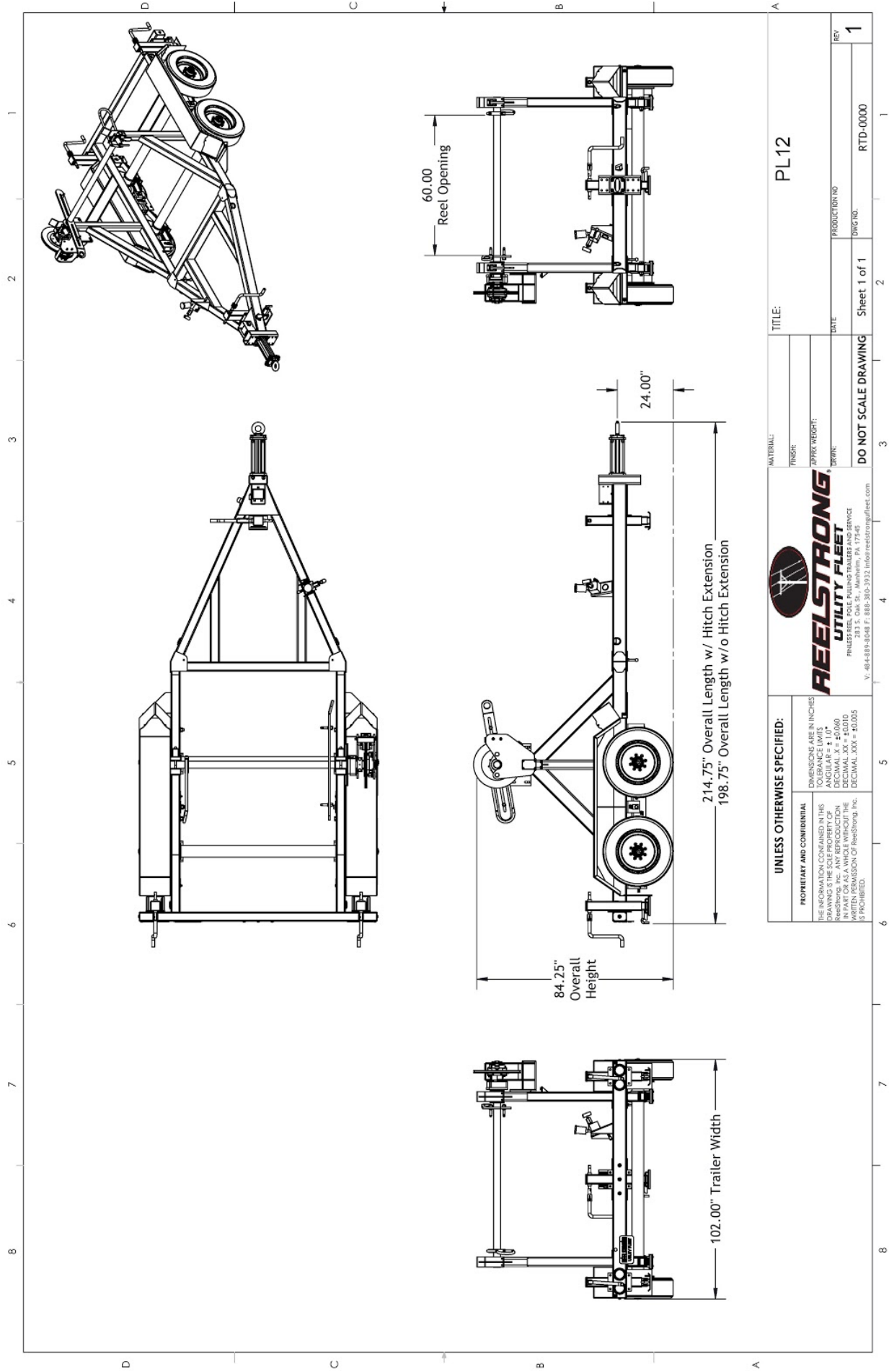
- I.M.P.A.C.T Intense Metal pH Acid Cleaning Technology
- Hydrofluoric, Sulfuric, Phosphoric ACID Blend Cleaning Preparation
(Re-used sandblasting material can impregnate metals with oil)
- Seams Caulked
- Rust Preventative 2-Part Epoxy Primer
- Standard Colors: Red, Black, White and CAT Yellow

OPTIONS

- 10-Year Galvanized Structural Warranty (2-Year Painted)
- 13 HP Honda Engine Hydraulic Power Unit
- Engine Cover
- 3,300 ft/lbs Hydraulic Take-up Retriever
- 2-7/16" Universal Adapter for Capstan and Power Reel Attachments
- 7 Inch General Purpose Capstan
- Collapsible Power Reel
- Auxiliary Hydraulic Quick-Connect Ports
- Rewind Leveler
- 20" Bronze Alloy Ventilated Reel Brake
- 16" Hitch Extension
- Aluminum or Steel Toolbox
- 10K-HD / 15K / 20K Axles Available w/ Air Brakes

OPTIONS (cont.)

- Anti-Lock Brakes (ABS)
- 3" Lunette Eye
- Wiring Connections Soldered and Sealed w/ Heat Shrink Tubing
- Plug-and-Play Sealco Wiring Harness
- Wheel Chocks: Rubber or All Weather Galvanized Grip Strut
- Spare Tire and Mount
- Solar Charged Breakaway Kit
- Strobe Warning Lights
- All Stainless Steel Fasteners (½" and under)
- Hydraulic Front Jack
- Truck-Lite Lighting



UNLESS OTHERWISE SPECIFIED:		DIMENSIONS ARE IN INCHES	
PROPRIETARY AND CONFIDENTIAL		TOLERANCE LIMITS	
THE INFORMATION CONTAINED IN THIS DRAWING IS THE SOLE PROPERTY OF REELSTRONG, INC. ANY REPRODUCTION OR TRANSMISSION OF THIS DRAWING WITHOUT THE WRITTEN PERMISSION OF REELSTRONG, INC. IS PROHIBITED.		ANGULAR = ± 1.0°	
		DECIMAL X = ± 0.060	
		FRACTIONAL X = ± 1/16"	
		DECIMAL XXX = ± 0.005	
		FRACTIONAL XXX = 1/32"	
		FRACTIONAL XXXX = 1/64"	
		FRACTIONAL XXXXX = 1/128"	
		FRACTIONAL XXXXXX = 1/256"	
		FRACTIONAL XXXXXX = 1/512"	
		FRACTIONAL XXXXXX = 1/1024"	
		FRACTIONAL XXXXXX = 1/2048"	
		FRACTIONAL XXXXXX = 1/4096"	
		FRACTIONAL XXXXXX = 1/8192"	
		FRACTIONAL XXXXXX = 1/16384"	
		FRACTIONAL XXXXXX = 1/32768"	
		FRACTIONAL XXXXXX = 1/65536"	
		FRACTIONAL XXXXXX = 1/131072"	
		FRACTIONAL XXXXXX = 1/262144"	
		FRACTIONAL XXXXXX = 1/524288"	
		FRACTIONAL XXXXXX = 1/1048576"	
		FRACTIONAL XXXXXX = 1/2097152"	
		FRACTIONAL XXXXXX = 1/4194304"	
		FRACTIONAL XXXXXX = 1/8388608"	
		FRACTIONAL XXXXXX = 1/16777216"	
		FRACTIONAL XXXXXX = 1/33554432"	
		FRACTIONAL XXXXXX = 1/67108864"	
		FRACTIONAL XXXXXX = 1/134217728"	
		FRACTIONAL XXXXXX = 1/268435456"	
		FRACTIONAL XXXXXX = 1/536870912"	
		FRACTIONAL XXXXXX = 1/1073741824"	
		FRACTIONAL XXXXXX = 1/2147483648"	
		FRACTIONAL XXXXXX = 1/4294967296"	
		FRACTIONAL XXXXXX = 1/8589934592"	
		FRACTIONAL XXXXXX = 1/17179869184"	
		FRACTIONAL XXXXXX = 1/34359738368"	
		FRACTIONAL XXXXXX = 1/68719476736"	
		FRACTIONAL XXXXXX = 1/137438953472"	
		FRACTIONAL XXXXXX = 1/274877906944"	
		FRACTIONAL XXXXXX = 1/549755813888"	
		FRACTIONAL XXXXXX = 1/1099511627776"	
		FRACTIONAL XXXXXX = 1/2199023255552"	
		FRACTIONAL XXXXXX = 1/4398046511104"	
		FRACTIONAL XXXXXX = 1/8796093022208"	
		FRACTIONAL XXXXXX = 1/17592186044416"	
		FRACTIONAL XXXXXX = 1/35184372088832"	
		FRACTIONAL XXXXXX = 1/70368744177664"	
		FRACTIONAL XXXXXX = 1/140737488355328"	
		FRACTIONAL XXXXXX = 1/281474976710656"	
		FRACTIONAL XXXXXX = 1/562949953421312"	
		FRACTIONAL XXXXXX = 1/1125899906842624"	
		FRACTIONAL XXXXXX = 1/2251799813685248"	
		FRACTIONAL XXXXXX = 1/4503599627370496"	
		FRACTIONAL XXXXXX = 1/9007199254740992"	
		FRACTIONAL XXXXXX = 1/18014398509481984"	
		FRACTIONAL XXXXXX = 1/36028797018963968"	
		FRACTIONAL XXXXXX = 1/72057594037927936"	
		FRACTIONAL XXXXXX = 1/144115188075855872"	
		FRACTIONAL XXXXXX = 1/288230376151711744"	
		FRACTIONAL XXXXXX = 1/576460752303423488"	
		FRACTIONAL XXXXXX = 1/1152921504606846976"	
		FRACTIONAL XXXXXX = 1/2305843009213693952"	
		FRACTIONAL XXXXXX = 1/4611686018427387904"	
		FRACTIONAL XXXXXX = 1/9223372036854775808"	
		FRACTIONAL XXXXXX = 1/18446744073709551616"	
		FRACTIONAL XXXXXX = 1/36893488147419103232"	
		FRACTIONAL XXXXXX = 1/73786976294838206464"	
		FRACTIONAL XXXXXX = 1/147573952589676412928"	
		FRACTIONAL XXXXXX = 1/295147905179352825856"	
		FRACTIONAL XXXXXX = 1/590295810358705651712"	
		FRACTIONAL XXXXXX = 1/1180591620717411303424"	
		FRACTIONAL XXXXXX = 1/2361183241434822606848"	
		FRACTIONAL XXXXXX = 1/4722366482869645213696"	
		FRACTIONAL XXXXXX = 1/9444732965739290427392"	
		FRACTIONAL XXXXXX = 1/18889465931478580854784"	
		FRACTIONAL XXXXXX = 1/37778931862957161709568"	
		FRACTIONAL XXXXXX = 1/75557863725914323419136"	
		FRACTIONAL XXXXXX = 1/151115727451828646838272"	
		FRACTIONAL XXXXXX = 1/302231454903657293676544"	
		FRACTIONAL XXXXXX = 1/604462909807314587353088"	
		FRACTIONAL XXXXXX = 1/1208925819614629174706176"	
		FRACTIONAL XXXXXX = 1/2417851639229258349412352"	
		FRACTIONAL XXXXXX = 1/4835703278458516698824704"	
		FRACTIONAL XXXXXX = 1/9671406556917033397649408"	
		FRACTIONAL XXXXXX = 1/19342813113834066795298816"	
		FRACTIONAL XXXXXX = 1/38685626227668133590597632"	
		FRACTIONAL XXXXXX = 1/77371252455336267181195264"	
		FRACTIONAL XXXXXX = 1/154742504910672534362390528"	
		FRACTIONAL XXXXXX = 1/309485009821345068724781056"	
		FRACTIONAL XXXXXX = 1/618970019642690137449562112"	
		FRACTIONAL XXXXXX = 1/1237940039285380274899124224"	
		FRACTIONAL XXXXXX = 1/2475880078570760549798248448"	
		FRACTIONAL XXXXXX = 1/4951760157141521099596496896"	
		FRACTIONAL XXXXXX = 1/9903520314283042199192993792"	
		FRACTIONAL XXXXXX = 1/19807040628566084398385987584"	
		FRACTIONAL XXXXXX = 1/39614081257132168796771975168"	
		FRACTIONAL XXXXXX = 1/79228162514264337593543950336"	
		FRACTIONAL XXXXXX = 1/158456325028528675187087900672"	
		FRACTIONAL XXXXXX = 1/316912650057057350374175801344"	
		FRACTIONAL XXXXXX = 1/633825300114114700748351602688"	
		FRACTIONAL XXXXXX = 1/1267650600228229401496703205376"	
		FRACTIONAL XXXXXX = 1/2535301200456458802993406410752"	
		FRACTIONAL XXXXXX = 1/5070602400912917605986812821504"	
		FRACTIONAL XXXXXX = 1/10141204801825835211973625643008"	
		FRACTIONAL XXXXXX = 1/20282409603651670423947251286016"	
		FRACTIONAL XXXXXX = 1/40564819207303340847894502572032"	
		FRACTIONAL XXXXXX = 1/81129638414606681695789005144064"	
		FRACTIONAL XXXXXX = 1/162259276829213363391578010288128"	
		FRACTIONAL XXXXXX = 1/324518553658426726783156020576256"	
		FRACTIONAL XXXXXX = 1/649037107316853453566312041152512"	
		FRACTIONAL XXXXXX = 1/1298074214633706907132624082305024"	
		FRACTIONAL XXXXXX = 1/2596148429267413814265248164610048"	
		FRACTIONAL XXXXXX = 1/5192296858534827628530496329220096"	
		FRACTIONAL XXXXXX = 1/10384593717069655257060992658440192"	
		FRACTIONAL XXXXXX = 1/20769187434139310514121985316880384"	
		FRACTIONAL XXXXXX = 1/41538374868278621028243970633760768"	
		FRACTIONAL XXXXXX = 1/83076749736557242056487941267521536"	
		FRACTIONAL XXXXXX = 1/166153499473114484112975882535043072"	
		FRACTIONAL XXXXXX = 1/332306998946228968225951765070086144"	
		FRACTIONAL XXXXXX = 1/664613997892457936451903530140172288"	
		FRACTIONAL XXXXXX = 1/1329227995784915872903807060280344576"	
		FRACTIONAL XXXXXX = 1/2658455991569831745807614120560689152"	
		FRACTIONAL XXXXXX = 1/5316911983139663491615228241121378304"	
		FRACTIONAL XXXXXX = 1/10633823966279326983230456482242756608"	
		FRACTIONAL XXXXXX = 1/21267647932558653966460912964485513216"	
		FRACTIONAL XXXXXX = 1/42535295865117307932921825928971026432"	
		FRACTIONAL XXXXXX = 1/85070591730234615865843651857942052864"	
		FRACTIONAL XXXXXX = 1/170141183460469231731687303715884105728"	
		FRACTIONAL XXXXXX = 1/340282366920938463463374607431768211456"	
		FRACTIONAL XXXXXX = 1/680564733841876926926749214863536422912"	
		FRACTIONAL XXXXXX = 1/1361129467683753853853498429727072845824"	
		FRACTIONAL XXXXXX = 1/2722258935367507707706996859454145691648"	
		FRACTIONAL XXXXXX = 1/5444517870735015415413993718908291383296"	
		FRACTIONAL XXXXXX = 1/10889035741470030830827987437816582766592"	
		FRACTIONAL XXXXXX = 1/21778071482940061661655974875633165533184"	
		FRACTIONAL XXXXXX = 1/43556142965880123323311949751266331066368"	
		FRACTIONAL XXXXXX = 1/87112285931760246646623899502532662132736"	
		FRACTIONAL XXXXXX = 1/174224571863520493293247799005065244265472"	
		FRACTIONAL XXXXXX = 1/348449143727040986586495598010130488530944"	
		FRACTIONAL XXXXXX = 1/696898287454081973172991196020260977061888"	
		FRACTIONAL XXXXXX = 1/1393796574908163946345982392040521954123776"	
		FRACTIONAL XXXXXX = 1/2787593149816327892691964784081043908247552"	
		FRACTIONAL XXXXXX = 1/5575186299632655785383929568162087816495104"	
		FRACTIONAL XXXXXX = 1/11150372599265311570767859136324175632990208"	
		FRACTIONAL XXXXXX = 1/22300745198530623141535718272648351265980416"	
		FRACTIONAL XXXXXX = 1/44601490397061246283071436545296702531960832"	
		FRACTIONAL XXXXXX = 1/89202980794122492566142873090593405063921664"	