



SPU-35 MOBILE OVD/URD UNIVERSAL P-LINE PULLER SPECS



EXCLUSIVE STANDARD ADDED VALUE:

- Industry Leading Safety, Ease of Use, Low Maintenance and Durability.
- Universal Adapter & Adjustable Rollers Accept Sherman & Reilly, TSE, & Eagle Spider Systems.
- Patent Pending 180° Degree Underground / Overhead Turret Winch Levelwind & Directional Control All-in-One.
- Hydraulic Rotating Turret Crane for Safety & Ease.
- Hydraulic Controlled Winch Traverse Prevents Runaway Winch,

BUILT FOR SAFETY. BUILT FOR SPEED. BUILT TO LAST.

MACHINE'S PURPOSE: The SPU-35 is a Pilot Line System for pulling in P-Lines, bull rope or direct to conductor. In many cases pulling directly to the conductor can save a significant amount of labor.

PROS :

- **VERY VERSATILE**
- **3,000 LBS OF PULL IN A COMPACT, SELF-CONTAINED PACKAGE**
- **ACCEPTS S&R, TSE and EAGLE CONTROLLER BASED “SPIDER STYLE” STRINGING SYSTEMS**
- **OVERHEAD “AND” UNDERGROUND PULLER ILO FOUR DRUM JUST OVERHEAD**
- **PATENT PENDING 180 DEGREE ROTATING LEVELWIND AND DIRECTIONAL ALL-IN-ONE TURRET FOR ULTRA-EASY LEVELWINDING.**
- **PULL 90 DEGREE FROM RIGHT AWAYS. NO LINING TRUCK UP WITH WORK (IN MOST CASES)**
- **TRAILER IS COMPACT STORAGE FOR ROPE, REELS AND CONTROLLERS**

CONS:

- **CAN ONLY PULL ONE CONDUCTOR AT A TIME vs FOUR-DRUM PULLER**
- **MUST CHANGE OUT REELS WITH CRANE ONE AT A TIME**

CAPACITIES

- SPU-35: 9,200 lbs. GVWR @ 15% Tongue Weight

AXLES

- SPU-35: 8K lbs. Torsion

WHEELS

- SPU-35: (2) 17.5 x 6.75 HC / 8 on 6.5 BC w/ 0.19 Inset

TIRES

- SPU-35: (2) ST-215/75R17.5 LR-H Tires

BRAKES

- SPU-35: 12.25" x 3.38" Electric w/ Safety Breakaway Kit

PAYLOAD: ALL FINAL PAYLOADS BASED ON CHOSEN MODEL AND OPTIONS

REEL WEIGHT (PAYLOAD)

- SPU-35: 3,100 lbs. Approx. (Combined)

REEL DIAMETER: 30" Maximum

REEL WIDTH: 15.50" Maximum

REEL SHAFT DIAMETER: 2-7/16" Tube

OVERALL LENGTH: 16.5' Approx. (194.75")

OVERALL WIDTH: 97.25"

CURB WEIGHT:

- SPU-35: 6,100 lbs. Approx. (Combined)

Actual Trailer Weight will Vary with Options & Finishes Chosen.

STANDARD FEATURES

- Industry Leading Safety, Ease of Use, Low Maintenance and Durability.
- Vanguard 35 HP Engine Pack Comes STANDARD w/ ENGINE COVER and Noise Suppression
- Oil Bath Hubs (Greaseable Option All)
- Electric Brakes
- Wheel Chock Holders
- Adjustable Swing Away Seat

—All specifications / designs are subject to change without notice - All GVWR and reel capacities are de-rateable to your needs.

STANDARD FEATURES (cont.)

- Ultra-Smooth Torsion Axle
- Low Center of Gravity

FUNCTIONAL DESCRIPTION:

The Reelstrong UF Universal Mobile Spider System is a 100% self-contained overhead / underground pulling system that accepts all major Spider Systems that you may already own and / or wish to purchase, consolidating your fleet and tool equipment into a compact, time and money saving, half (½) ton towable package. The dual purpose Patent-Pending reel winch hydraulically rotates on a turret allowing for safe and convenient directional control of rope from any 180 degree angle in tight spots and “levelwinds” without the need for a hydraulic cylinder powered traversing fairlead. The reel lift crane is controlled by a tethering remote pendant keeping the operator safely away from the rotating crane and the “hydraulic traversing” (non free-sliding) which prevents the possibility of a runaway winch on uneven terrain further protecting the operator. It’s the most safe, convenient, and cost effective spider pulling system ever made.

STANDARD TRAILER BODY

- Heavy Duty 6” X 3” X ¼” Frame
- 6-Position Adjustable Hitch
- ¾” X 36” GR70 Yellow Zinc Safety Chains with Hooks
- (1) Hydraulic Front Jack
- (2) Rear Hydraulic Stabilizer Jacks
- Ground Lug: Copper Alloy Bolted to Frame
- Fenders: ½” Plate
- 10-Year Galvanized Structural Warranty (2-Year Painted)

WIRING

- DOT / ICC Approved LED Lights and Conspicuity Reflective Tape
- FMVSS / CMVSS Standard 108 LED Lighting
- Sealed Beam, Rubber Mounted Stop, Turn, Tail and Marker Lights
- 100% Sealed Heat-Shrunked Wiring Connections w/ Full Loom
- Breakaway Kit with Absorbed Glass Mat (AGM) Battery

PAINT

- I.M.P.A.C.T Intense Metal pH Acid Cleaning Technology
- Hydrofluoric, Sulfuric, Phosphoric ACID Blend Cleaning Preparation
(Re-used sandblasting material can impregnate metals with oil)
- Seams Caulked
- Rust Preventative 2-Part Epoxy Primer
- Standard Colors: Red, Black, White and CAT Yellow

OPTIONS

- Yanmar Tier 4 Diesel Engine Pack Comes STANDARD w/ ENGINE COVER
- Auxiliary Hydraulic Quick-Connect Ports
- 16" Long 6-Bolt Hitch Extension (w/ 52" Safety Chains and Breakaway Cable Extension)
- 3" Lunette Eye
- Wiring Connections Soldered and Sealed w/ Heat Shrink Tubing
- Plug-and-Play Sealco Wiring Harness
- Wheel Chocks: Rubber or All Weather Galvanized Grip Strut
- Spare Tire and Mount
- Solar Charged Breakaway Kit
- Aluminum or Steel Toolbox
- 12" Caster Wheel for Tongue Jack
- Strobe Warning Lights
- All Stainless Steel Fasteners (1/2" and under)
- 7 Inch Capstan
- Collapsible Power Reel
- Fiber Optic Clutch Capstan
- Truck-Lite Lighting
- Lug Nut Indicators
- Underground Package
 - Pad Mount Transformer Arm
 - Fairlead for Wire Rope
- Universal AT&T Bayonet Adapter
- 3,000 Ft. Aluminum Reel for 5/16" Rope (3/8" and 1/2" Rope Available)
- 6,000 Ft. Aluminum Reel for 5/16" Rope (3/8" and 1/2" Rope Available)
- 3,000 Ft. Steel Reel for 3/8" Steel Cable (for Underground Package)
- 5/16", 3/8", or 1/2" Rope (Yellow, Red, Blue, Green)

ESTIMATE LINE TENSION (IN LBS) BY ALIGNING THE PULLING DIAMETER TO THE HYDRAULIC PRESSURE SETTING

		PULLING MOTOR HYDRAULIC PRESSURE GAUGE READING (IN PSI)												
		200	400	600	800	1000	1200	1400	1600	1800	2000	2200	2400	2600
P U L L I N G D I A M E T E R	30	91	337	587	840	1097	1356	1617	1878	2140	2401	2662	2920	3176
	28	98	361	629	900	1175	1453	1732	2012	2293	2573	2852	3128	3402
	26	105	388	677	970	1266	1565	1865	2167	2469	2771	3071	3369	3664
	24	114	421	733	1051	1371	1040	2021	2348	2675	3002	3327	2650	3970
	22	124	459	800	1146	1496	1849	2205	2561	2918	3275	3629	3982	4330
	20	137	505	880	1261	1646	2034	2425	2817	3210	3602	3992	4380	4763
	18	152	561	978	1401	1829	2260	2695	3130	3567	4002	4436	4866	5293
	16	171	631	1100	1576	2057	2543	3031	3522	4013	4503	4990	5475	5954
	14	195	721	1257	1801	2351	2906	3464	4025	4586	5146	5703	6257	6805

XXXX OVERHEAD PULL SETTING

ESTIMATE LINE SPEED BY ALIGNING THE FLOW CONTROL SETTING TO THE PULLING DIAMETER

			PULLING DIAMETER								
			14	16	18	20	22	24	26	28	30
F L O W C O N T R O L	100%	FT/MIN	92	106	119	132	145	158	172	185	198
		MPH	1.0	1.2	1.3	1.5	1.6	1.8	1.9	2.1	2.2
	75%	FT/MIN	69	79	89	99	109	119	129	139	149
		MPH	0.8	0.9	1.0	1.1	1.2	1.3	1.5	1.6	1.7
	50%	FT/MIN	46	53	59	66	73	79	86	92	99
		MPH	0.5	0.6	0.7	0.7	0.8	0.9	1.0	1.0	1.1
	25%	FT/MIN	23	26	30	33	36	40	43	46	50
		MPH	0.3	0.3	0.3	0.4	0.4	0.4	0.5	0.5	0.6
	ESTIMATES ARE BASED ON ENGINE SPEED OF 2500 RPM										

PE-12/Pilot Line



PE-12

PE-12 has been re-engineered, boosting its strengths significantly. Using the same high-tenacity fiber we use in our value-packed Portland Braid, this polyester single braid offers a single-end-per-carrier construction, which keeps the rope from flattening out in service and self centers in sheaves beautifully. PE-12 comes with

the same tough grades of Maxijacket urethane we use on our more expensive products. PE-12 is easy to splice, and field repairs are easily accomplished. It is available in unlimited lengths and brilliant colors for easy identification. PE-12 is torque free and is undamaged when rigging with swivels.

Specifications

Diameter		Average Spliced Break Strength*		Minimum Spliced Break Strength*		Maximum** Working Load 5:1		Weight	
Inches	(mm)	Lbs	Kg	Lbs	Kg	Lbs	Kg	Lbs/100ft	Kg/100m
5/16	(8)	3,900	1,770	3,510	1,593	780	354	2.9	4.3
3/8	(10)	5,900	2,675	5,310	2,408	1,180	535	3.9	5.8
7/16	(11)	10,000	4,540	9,000	4,086	2,000	980	6.4	9.5
1/2	(13)	12,500	5,675	11,250	5,108	2,500	1,135	8.5	12.7
9/16	(14)	15,800	7,170	14,220	6,453	3,160	1,434	10.5	15.6
5/8	(16)	18,500	8,395	16,650	7,556	3,700	1,679	11.4	17.0
3/4	(19)	23,250	10,555	20,925	9,500	4,650	2,111	17.4	25.9
7/8	(22)	34,350	15,590	30,915	14,031	6,870	3,118	25.9	38.6
1	(25)	41,600	18,885	37,440	16,997	8,320	3,777	31.3	46.6



Pilot Line

Pilot Line is a 12-strand 100% polyester single braid with Maxijacket coating to improve abrasion resistance.

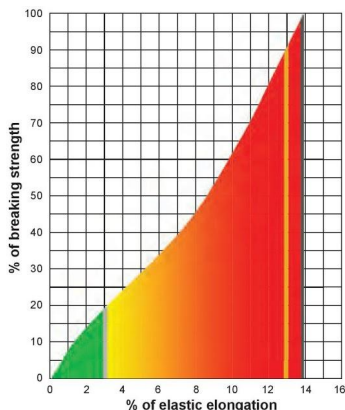
It is used as a pilot line for stringing applications. Available in standard colors of black, blue, green and red. Other colors available upon request.

Specifications

Nominal Diameter		Average Spliced Break Strength*		Minimum Spliced Break Strength*		Maximum** Working Load 5:1		Weight	
Inches	(mm)	Lbs	Kg	Lbs	Kg	Lbs	Kg	Lbs/100ft	Kg/100m
5/16	(8)	3,600	1,630	3,240	1,467	720	326	2.3	3.4

* Knots and abrupt bends significantly reduce the strength of all ropes and lower maximum working load.

** Working load is based on static or moderately dynamic lifting/pulling operations. Instantaneous changes in load up or down, in excess of 10% of the rope's rated working load constitute hazardous shock load and would void the normal working-load recommendation. Consult Yale Cordage for guidelines for working loads and the safe use of rope.



Energy Absorption

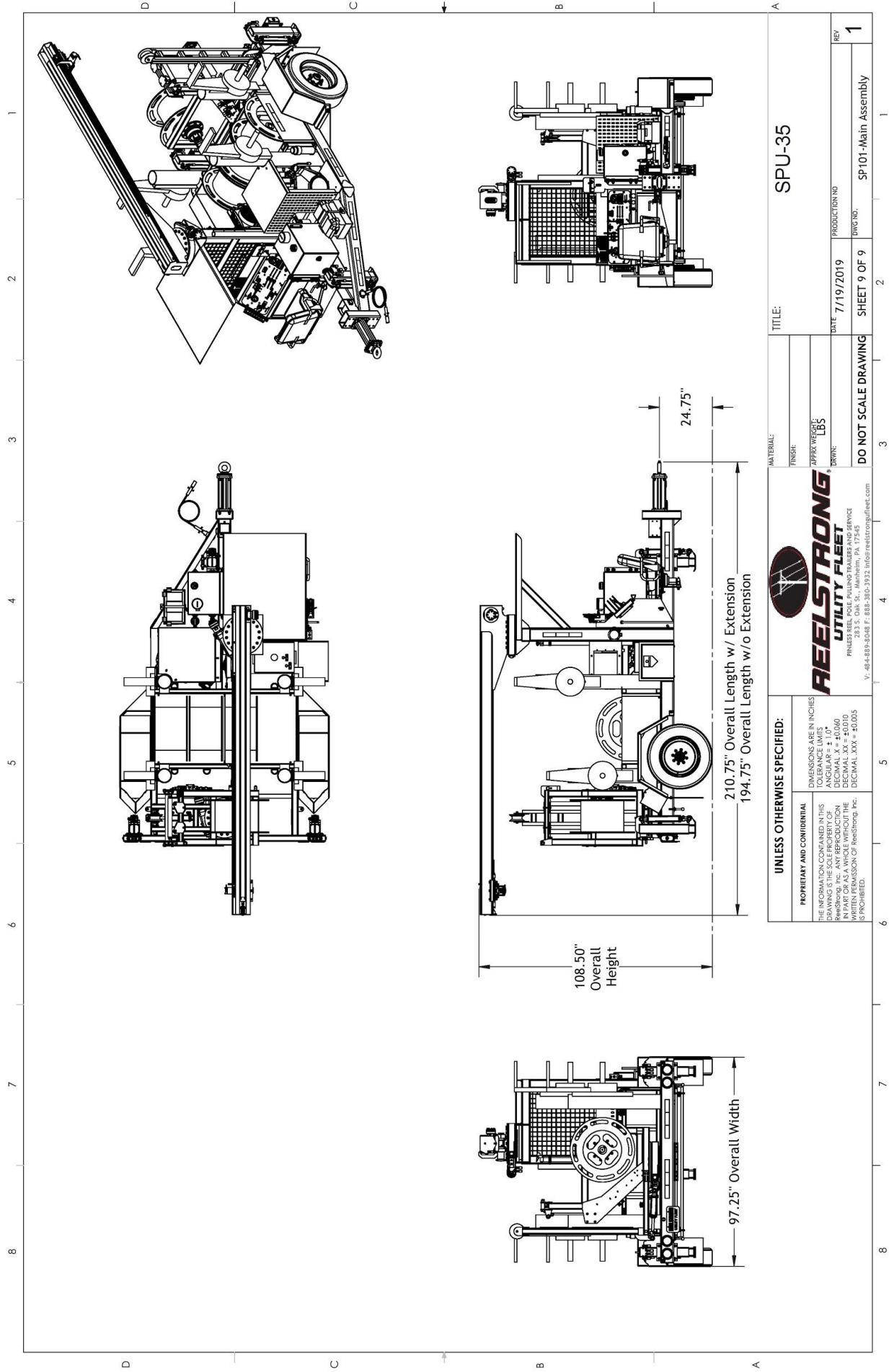
The colored area under the curve represents the rope's ability to do "work" and is expressed in foot-pounds per pound of rope in tension.

- Green working 406 ft. lbs./lb.
- Red ultimate 8,738 ft. lbs./lb.

Dielectric Strength: The maximum allowable leakage for clean, dry PE-12 and Pilot Line is 100 micro-amperes when tested at 100kV per Yale Method 712-1701 Rev 1 "Routine Production Test." Absorbed and entrained moisture or impurities will increase rope's conductivity dramatically.

Approved Splice Technique: #10015101.

- Maximum Working Load
 - Minimum Break Strength
 - Average Break Strength
- Specific Gravity: 1.38



UNLESS OTHERWISE SPECIFIED:		DIMENSIONS ARE IN INCHES TOLERANCE LIMITS: ANGULAR $\pm 1.0^\circ$ DECIMAL $\pm .0060$ FRACTIONS $\pm .0005$ HOLE LOCATIONS $\pm .0005$ HOLE DIA. $\pm .0005$ HOLE LENGTH $\pm .0005$ HOLE TAPER $\pm .0005$ HOLE DRILLING $\pm .0005$ HOLE FINISH $\pm .0005$ HOLE TOLERANCE $\pm .0005$ HOLE POSITION $\pm .0005$ HOLE DIA. $\pm .0005$ HOLE LENGTH $\pm .0005$ HOLE TAPER $\pm .0005$ HOLE DRILLING $\pm .0005$ HOLE FINISH $\pm .0005$ HOLE TOLERANCE $\pm .0005$ HOLE POSITION $\pm .0005$
PROPRIETARY AND CONFIDENTIAL THE INFORMATION CONTAINED IN THIS DRAWING IS THE SOLE PROPERTY OF REELSTRONG, INC. ANY REPRODUCTION OR TRANSMISSION OF THIS DRAWING WITHOUT THE WRITTEN PERMISSION OF REELSTRONG, INC. IS PROHIBITED.		 REELSTRONG[®] UTILITY FLEET PINLESS REEL POLE PULLING TRAILERS AND SERVICE 1000 W. 10TH AVE., SUITE 100 DENVER, CO 80202 P: 303-733-8888 F: 303-733-8889 info@reelstrong.com
TITLE: SPU-35		MATERIAL: APPROX WEIGHT: LBS
DATE: 7/19/2019		DRAWN: DO NOT SCALE DRAWING
PRODUCTION NO.		SHEET 9 OF 9
REV		SP-101-Main Assembly
1		1