



CPTD LIFETIME WARRANTY MEGA-ROLLER™ w/ SELF-SECURING TONGUE-LOCK COMBINATION REEL / POLE / CARGO DUMP SPECIFICATION



LOWEST TOTAL COST OF OWNERSHIP (TCO) via:

- **LIFETIME WARRANTY MEGA-ROLLER™** (6 Roller Patent Pending) w/ Bronze Super Alloy Bearings Provides a Smooth “ONE MAN OPERATION” of the Tongue. NO TRUCK NEEDED to Extend or Retract. NO WEAR PADS TO MAINTAIN OR REPLACE.
- SELF-SECURING SECURELOCK™ Tongue-lock. No Pins to Lose.
- **PRACTICAL:** No Expensive, Unnecessary Bronze Components, yet we Don't Cut Corners and Provide Premium, Heavy Duty, Top-Quality Latches, Hardware, Fittings and Components.
- Non-Binding/Freezing EZ Slide Pole Centering Stanchions. Replaces Rusted/Seized Lever Lock Stanchions and Expensive Bronze.
- Heavy Duty yet Simple 5” H-Beam Pole Seats

BUILT FOR SAFETY. BUILT FOR SPEED. BUILT TO LAST.

CAPACITIES

- CPTD16: 18,200 lbs. GVWR @ 15% Tongue Weight
- CPTDL16: 18,200 lbs. GVWR @ 15% Tongue Weight
- CPTD20: 22,100 lbs. GVWR @ 15% Tongue Weight
- CPTDL20: 22,100 lbs. GVWR @ 15% Tongue Weight

AXLES

- CPTD16: Tandem 8K lbs. Torsion
- CPTDL16: Tandem 8K lbs. Torsion
- CPTD20: Tandem 10K lbs. Sprung
- CPTDL20: Tandem 10K lbs. Sprung

WHEELS

- CPTD16: (4) 16 x 6K / 8 on 6.5 BC w/ Zeroset
- CPTDL16: (4) 16 x 6K / 8 on 6.5 BC w/ Zeroset
- CPTD20: (4) 17.50 x 6.75 HC / 8 on 6.5 BC w/ 0.19 Inset
- CPTDL20: (4) 17.50 x 6.75 HC / 8 on 6.5 BC w/ 0.19 Inset

TIRES

- CPTD16: (4) ST-235/85R16 LR-F Tires
- CPTDL16: (4) ST-235/85R16 LR-F Tires
- CPTD20: (4) ST-215/75R17 LR-H Tires
- CPTDL20: (4) ST-215/75R17 LR-H Tires

BRAKES

- CPTD16: 12.25" x 3.38" Electric w/ Safety Breakaway Kit
- CPTDL16: 12.25" x 3.38" Electric w/ Safety Breakaway Kit
- CPTD20: 12.25" x 3.38" Electric w/ Safety Breakaway Kit
- CPTDL20: 12.25" x 3.38" Electric w/ Safety Breakaway Kit

PAYLOAD: ALL FINAL PAYLOADS BASED ON CHOSEN MODEL AND OPTIONS

LENGTH Retracted / Extended Lengths:

- CPTD16: 22' / 27' / 32'
- CPTDL16: 26' / 33' / 40'
- CPTD20: 22' / 27' / 32'
- CPTDL20: 26' / 33' / 40'
- **Optional** Additional / Less Extension Increments Available

WIDTH: 96"

WEIGHT: Actual Trailer Weight will Vary with Options & Finishes Chosen.

—All specifications / designs are subject to change without notice - All GVWR and reel capacities are de-rateable to your needs.

POLE SEAT HEIGHT: 45"

CARGO BED

- CPTD16: 114" L X 63.75" W x 15" H (Customizable)
- CPTDL16: 144" L X 63.75" W x 15" H (Customizable)
- CPTD20: 114" L X 63.75" W x 15" H (Customizable)
- CPTDL20: 144" L X 63.75" W x 15" H (Customizable)

STANDARD FEATURES

- **LIFETIME WARRANTY MEGA-ROLLER 6-ROLLER** Telescoping Tongue
(NO WEAR PADS TO REPLACE)
- **SELF-SECURING SECURELOCK™** Tongue Lock Roller System (No Loose Pin)
- **NON-BINDING / FREEZING EZ-SLIDE POLE-CENTERING STANCHIONS**
- Oil Bath Hubs (Greaseable Option All)
- Electric Brakes
- Wheel Chock Holders
- Hydraulic Dump Bed (Dual Hydraulic Cylinder w/ Tandem Dual Counterbalance Check Valves for Max Safety)

POLE SECUREMENT

- ALL Pole Rests: 5" H Beam
- Winch Binders w/ Ratcheting Breaker Bar (**BOA Crank Winch Optional**)

STANDARD TRAILER BODY

- 6" X 6" X 3/8" ("Square" for Max Equal Lateral and Vertical Strength) Male Extendable Tongue. (Compare to Competition)
- 8" X 8" X 1/4" Wall Female Tongue Tube
- 7" X 3" X 1/4" Wall Frame
- 7-Position Adjustable Hitch
- 3/8" X 36" GR70 Yellow Zinc Safety Chains with Hooks
- Removable Male Extension Tongue
- Standard Cargo Area
- 12,000 lbs. Static Front Jack w/ Spring Return
- Tailgate Chains
- Front Removable / Adjustable Pole Seat Mounted on Front Male Tongue
- 60" Wide 5" H-Beam Pole Seat w/ EZ-Slide Stanchions (Hitch Extension Recommended to Prevent Jack-knifing and Clear Most Step Bumpers)
- Six (6) D-Rings Front, Center and Rear for Cargo

WIRING

- LED Sealed Beam Rubber Mounted Stop, Turn, Tail and Marker Lights

—All specifications / designs are subject to change without notice - All GVWR and reel capacities are de-rateable to your needs.

WIRING (cont.)

- DOT / ICC-- FMVSS / CMVSS Approved LED ULTRA- HIGH VISIBILITY 180 DEGREE BULLET Marker and Clearance Lights
- **Internal Cat Track** Protects Wiring (and air brakes if applicable)
- Removable Rear Access Door to Access Cat Track and Wiring
- Breakaway Kit with Absorbed Glass Mat (AGM) Battery
- Crimped and Heat Shrunk Wiring Connections with Full Loom
- Breakaway Kit with Absorbed Glass Mat (AGM) Battery
- FULLY PROTECTED 7 or 6 Way Female Plug acts as Junction Box Recessed in FRAME RAIL. No Easily Damaged Plastic Junction Boxes

PAINT

- I.M.P.A.C.T Intense Metal pH Acid Surface Prep
(Superior to sandblasting that can infuse metal w/ oil)
- Seams Caulked
- Rust Preventative 2-Part Epoxy Primer
- Two-Part Polyurethane Topcoats (2 topcoats)
- Standard Colors: White and CAT Yellow (Custom Available)

OPTIONS

- Full Width of Trailer 5" H-Beam Pole Seat ILO 60" Wide
- 10-Year Galvanized Structural Warranty (2-Year Painted)
- BOA Hand Operated Ratcheting Pole Strap Winch for SAFETY and Ultra Ease-of-use
- Air Brakes w/ ABS
- 1 x 7,000 LB Center REEL STAND w/ Ultra-Low Friction, High Impact Nylatron Reel Bar Saddle
- 2 x 5,000 LB Reel Stands

IF REEL STAND/S ARE CHOSEN THE FOLLOWING OPTIONS ARE POSSIBLE

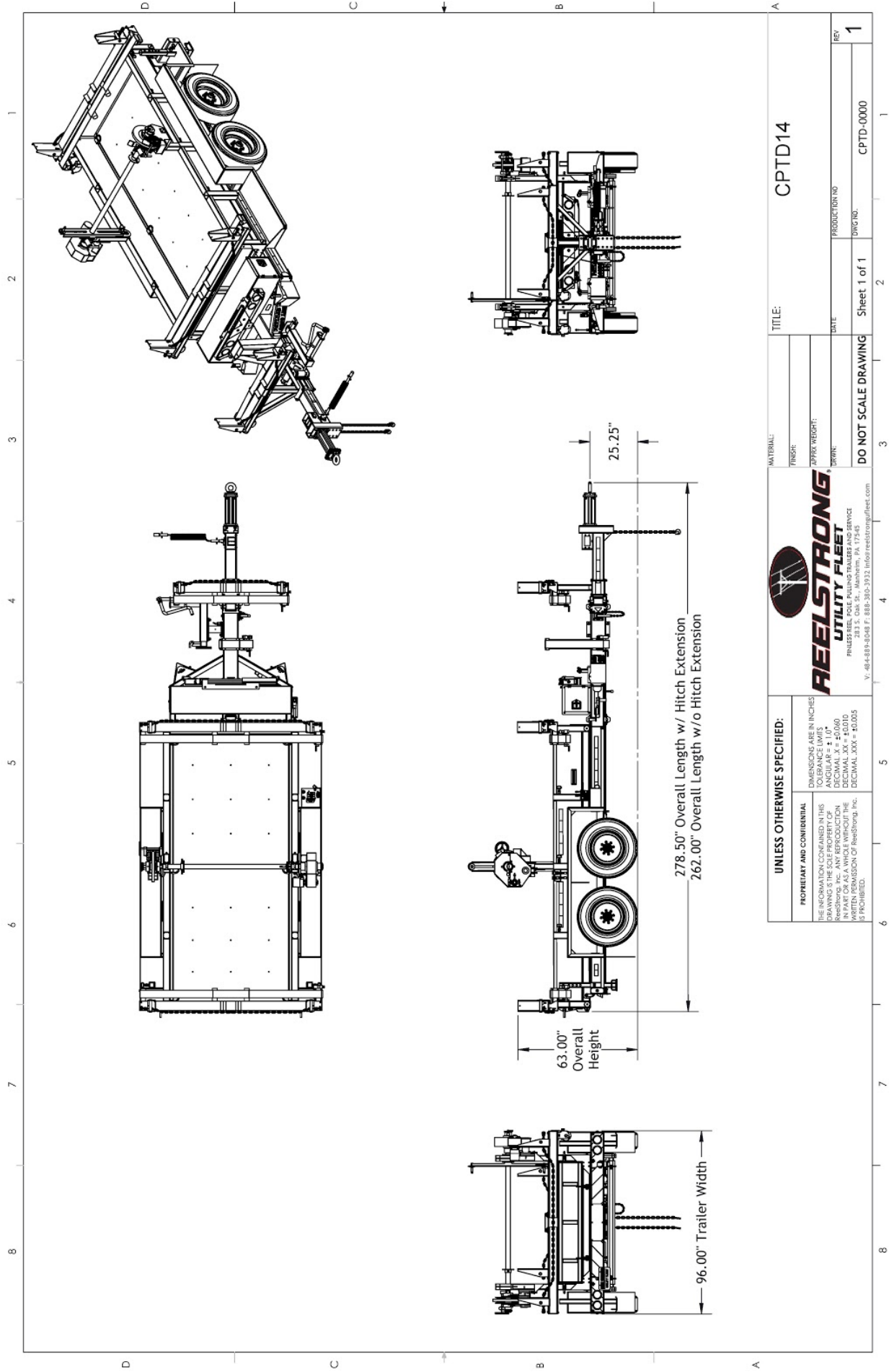
- 16" Bronze Alloy TRU-STOP Ventilated Reel Brake
- 3,300 ft/lbs Torque Hydraulic Take-up Retriever. (Motor Spooled w/ Reel Brake ILO Cross-Over Relief Valve for Smooth Instant Reel Stoppage)
- 2-7/16" Universal Adapter for Capstan, Collapsible Reel and Fiber-Optic Capstans
- 7 Inch General Purpose Capstan
- Collapsible Power Reel
- Slip-Clutch Fiber-Optic Pulling Capstan
- 13 HP HONDA Engine Hydraulic Power Pack w/ 15 Gallon Reservoir, Replaceable Oil Filter, Pressure Gauge and Solar Fade Resistant Plastic Control Placard. (Electric Start Optional)
- Aluminum Engine Cover

OPTIONS (cont.)

- 3" Lunette Eye
- Lever Lock Stanchions
- Wiring Connections Soldered and Sealed w/ Heat Shrink Tubing
- Wheel Chocks: Rubber or All Weather Galvanized Grip Strut
- Spare Tire and Mount
- Extension Intervals to Customer Spec
- Solar Charged Breakaway Kit
- Full Side-Opening Toolbox Package
- Full Top-Opening Toolbox Package
- Quick-Rotate Swivel Jack
- 16" Hitch Extension (w/ 52" Safety Chains and Breakaway Cable Extension)
- All Stainless Steel Fasteners (½" and under)
- Anti-Skid/Anti-Glare Sand Paint on all Walking Surfaces
- Various Trailer Light Plugs (Customer Choice)
- Plug-and-Play Sealco Wiring Harness (inquire about lead-time)
- Custom 10' Cargo Bed ILO Standard 12' Cargo Bed

OPTIONAL LIGHT BAR

- All TIG Welded Aluminum w/ Claw-Tooth for Superior Grip
- Contains (4) Four 4" Stop/Turn / Tail Rubber Mounted Sealed Beam LED Lights
- (3) Three Center ID Marker Lights
- (2) Two Side Marker Lights
- 7-Way REMOVABLE, DOUBLE ENDED NON-HARD WIRED Light Plug (to prevent yank-out damage and for easy maintenance) (7-Way ILO 4-Way is easier to source and more readily available for you)
- 35' Standard Electric Cable Length with a 7-Way Connector Plug



UNLESS OTHERWISE SPECIFIED:		DIMENSIONS ARE IN INCHES TOLERANCE LIMITS: ANGULAR ± 1.0° DECIMAL .X = ±0.060 FRACTIONS 1/16" AND SMALLER ± 0.015 DECIMAL .XXX = ±0.005	
PROPRIETARY AND CONFIDENTIAL THE INFORMATION CONTAINED IN THIS DRAWING IS THE SOLE PROPERTY OF ReelStrong, Inc. ANY REPRODUCTION OR TRANSMISSION OF THIS INFORMATION WITHOUT THE WRITTEN PERMISSION OF ReelStrong, Inc. IS PROHIBITED.		 REELSTRONG[®] UTILITY FLEET PNEUMATIC TIRE, POLE PULLING TRAILERS AND SERVICE EQUIPMENT 173945 V. 484-889-6248 F. 888-303-3932 info@reelstrong.com	
TITLE:		CPTD14	
MATERIAL:		FINISH:	
TYPICAL WEIGHT:		DATE:	
DRAWING:		DO NOT SCALE DRAWING	
PRODUCTION NO:		Sheet 1 of 1	
DRAWING:		CPTD-0000	
REV:		1	

