



PLC POWERLOCK™ REEL / CARGO TRAILER SPECS



LOWEST TOTAL COST OF OWNERSHIP (TCO) via:

- **LIFETIME WARRANTY PINLESS POWERLOCK™** Reel Bar Securement
- No Pins or Cotters to Secure Reel Bar (*most critical safety point*).
- Fastest, Safest Loading, Unloading and Deployment Reduces Labor.
- Yellow Zinc Electro-Plated and Stainless Precision Machined Components
- **PRACTICAL:** No Expensive, Unnecessary Bronze Components, yet we Don't Cut Corners and Provide Premium, Heavy Duty, Top-Quality Latches, Hardware, Fittings and Components.
- OPEN TOP, "NON ENCAPSULATED" NYLATRON BEARING SADDLE (low-coefficient of friction). OPEN TOP = LESS FRICTION/LOW MAINTENANCE and EASIER PAY-OUT.
(Haven't Replaced a Saddle due to Wear in 13 Years)

BUILT FOR SAFETY. BUILT FOR SPEED. *BUILT TO LAST.*

CAPACITIES

- PLC8: 11,050 lbs. GVWR @ 15% Tongue Weight
- PLC10: 16,100 lbs. GVWR @ 15% Tongue Weight
- PLC16: 22,000 lbs. GVWR @ 15% Tongue Weight

AXLES

- PLC8: Single 10K lbs. Sprung
- PLC10: Tandem 7K lbs. Torsion
- PLC16: Tandem 10K lbs. Sprung

WHEELS

- PLC8: (2) 17.5 x 6.75 HC / 8 on 6.5 BC w/ 0.19 Outset
- PLC10: (4) 16 x 6K / 8 on 6.5 BC w/ Zeroset
- PLC16: (4) 17.5 x 6.75 HC / 8 on 6.5 BC w/ 0.19 Outset

TIRES

- PLC8: (2) LT-215/75R17.5 LR-H Tires
- PLC10: (4) ST-235/85R16 LR-E Tires
- PLC16: (4) LT-215/75R17.5 LR-H Tires

BRAKES

- PLC8: 12.25" x 3.38" Electric w/ Safety Breakaway Kit
- PLC10: 12.00" x 2.00" Electric w/ Safety Breakaway Kit
- PLC16: 12.25" x 3.38" Electric w/ Safety Breakaway Kit

REEL / CARGO WEIGHT (PAYLOAD)

- PLC8: 8,000 lbs Approx
- PLC10: 10,000 lbs Approx
- PLC16: 16,000 lbs Approx

(ADDITIONAL WEIGHT OF OPTIONS REDUCES PAYLOAD)

CARGO AREA:

- PLC8: 5' x 10'
- PLC10: 71" x 12'
- PLC16: 71" x 12'

REEL DIAMETER: 72" Max (Larger dia available)

REEL WIDTH: 56" Max (60" wide optional if trailer is made wider)

REEL BAR DIA: 2.5"

—All specifications / designs are subject to change without notice - All GVWR and reel capacities are de-rateable to your needs.

OVERALL LENGTH:

- PLC8: 15' Approx
- PLC10: 231" Approx
- PLC16: 231" Approx

OVERALL WIDTH: 96" All**OVERALL WEIGHT:**

- PLC8: 2,500 lbs Approx
- PLC10: 3,150 lbs Approx
- PLC16: Inquire

STANDARD FEATURES

- LIFETIME WARRANTY PINLESS POWERLOCK™ on Reel Stand
- Oil Bath Hubs (Greaseable Option All)
- Electric Brakes
- Wheel Chock Holders
- Dexter Axles
- OPEN TOP, "NON ENCAPSULATED" NYLATRON BEARING SADDLE (low-coefficient of friction). OPEN TOP = LESS FRICTION/LOW MAINTENANCE and EASIER PAY-OUT. (Haven't Replaced a Saddle due to Wear in 13 Years)

STANDARD TRAILER BODY

- 5" X 2" X 1/4" Tubular Frame
- 6-Position Adjustable Hitch
- 3/8" X 36" GR70 Yellow Zinc Safety Chains with Hooks
- 12,000 lbs. Front Jack w/ Spring Return
- Ground Lug: Copper Alloy Star Washer Bolted to Frame (Welded Optional)
- Fenders: 1/8" Fabricated Diamond Plate
- (2) Rear 8,000 lbs. CRANK-DOWN Outrigger Jacks
- Wheel Chock Holders
- Built-in Reel Pockets to Accept Optional Removable Reel Stands
- Bed Sides: 24" Tall Standard

WIRING

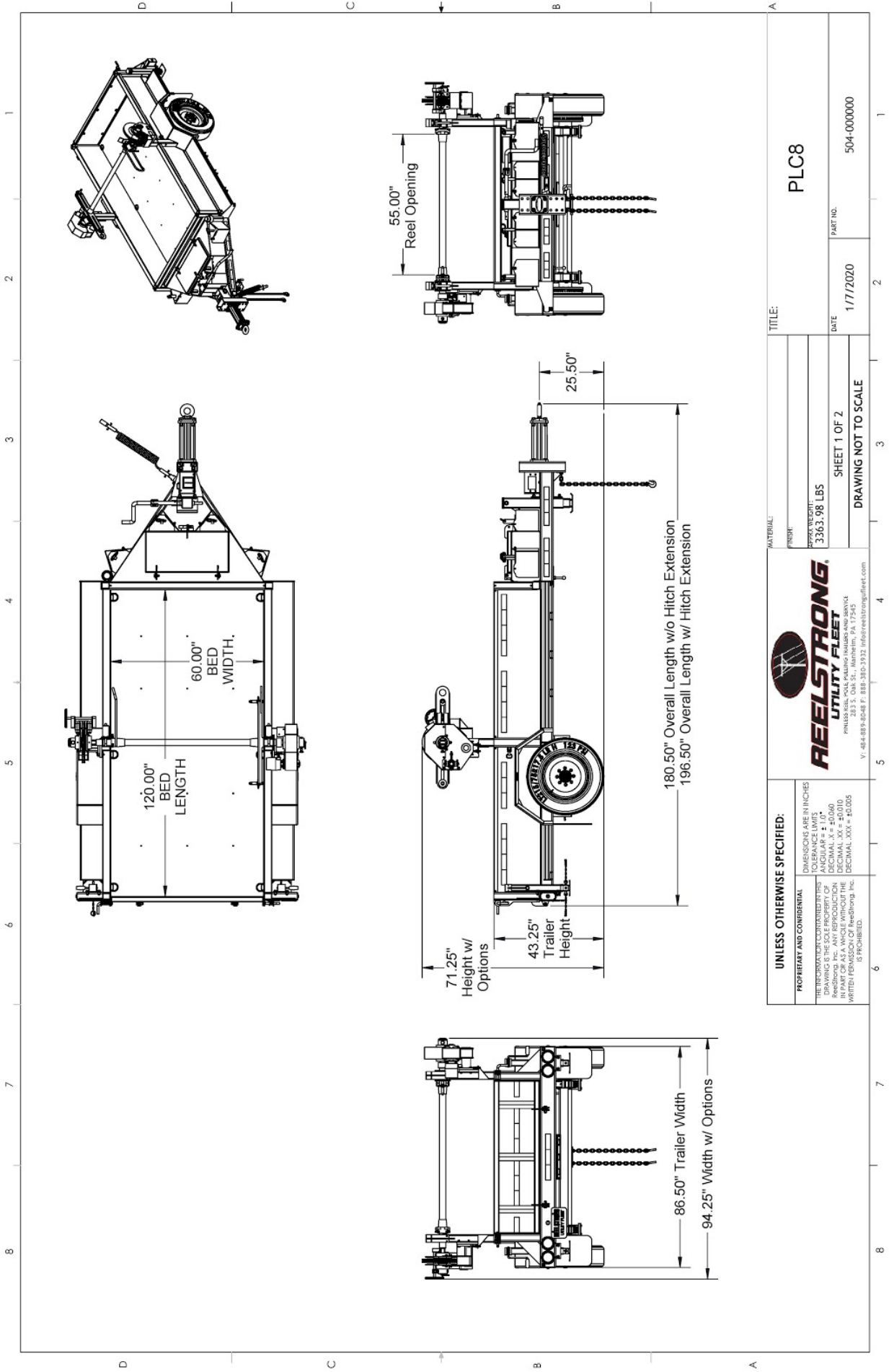
- DOT / ICC-- FMVSS / CMVSS Approved LED ULTRA- HIGH VISIBILITY 180 DEGREE BULLET Marker and Clearance Lights
- LED Sealed Beam Rubber Mounted Stop, Turn, Tail and Marker Lights
- 100% Sealed Heat-Shrunked Wiring Connections w/ Full Loom
- Breakaway Kit with Absorbed Glass Mat (AGM) Battery
- FULLY PROTECTED 7 or 6 Way Female Plug acts as Junction Box Recessed in FRAME RAIL. No Easily Damaged Plastic Junction Boxes!

PAINT

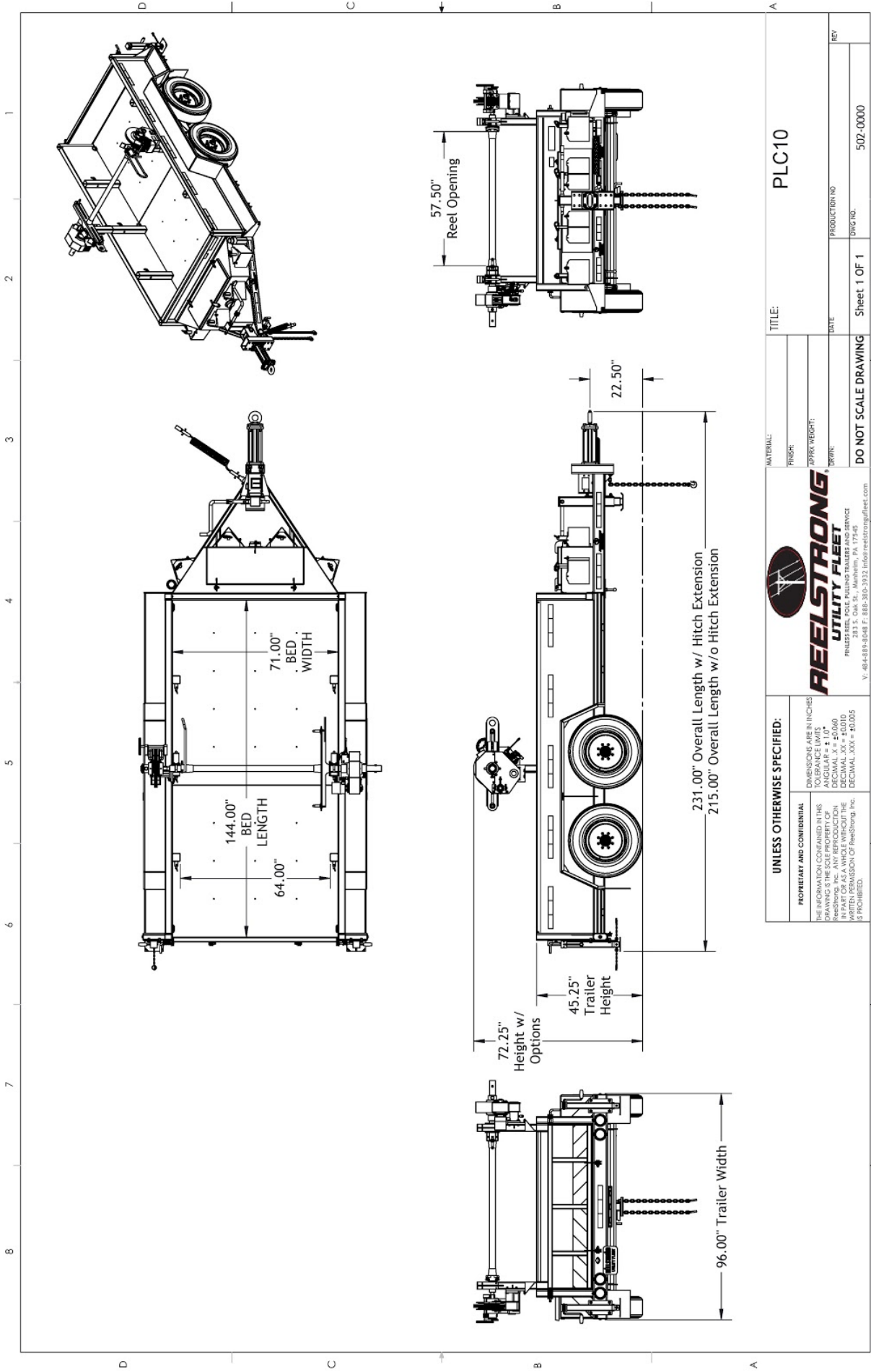
- I.M.P.A.C.T Intense Metal pH Acid Surface Prep
(Superior to sandblasting that can infuse metal w/ oil)
- Seams Caulked
- Rust Preventative 2-Part Epoxy Primer
- Two-Part Polyurethane Topcoats (2 topcoats)
- Standard Colors: White and CAT Yellow (Custom Available)

OPTIONS

- 10-Year Galvanized Structural Warranty (2-Year Painted)
- Cross Tongue Top-Opening Toolbox w/ Lift Maintainer Design
- Catwalks w/ Anti-Slip SERRATED Surface
- 18", 20" Tall Cargo Wall
- 13 HP HONDA Engine Hydraulic Power Pack w/ 15 Gallon Reservoir, Replaceable Oil Filter, Pressure Gauge and Solar Fade Resistant Plastic Control Placard.
(*Electric Start Optional*)
- Aluminum Engine Cover
- 3,300 ft/lbs Torque Hydraulic Take-up Retriever. (*Motor Spooled w/ Reel Brake ILO Cross-Over Relief Valve for Smooth Instant Reel Stoppage*)
- 16" Bronze Alloy TRU-STOP Ventilated Reel Brake
- 2-7/16" Universal Adapter for Capstan and Power Reel Attachments
- 7 Inch General Purpose Capstan
- Collapsible Power Reel
- 9" Stainless Steel Overspin Brake
- 16" Hitch Extension (w/ 52" Safety Chains and Breakaway Cable Extension)
- All Stainless Steel Fasteners (1/2" and under)
- Anti-Skid/Anti-Glare Sand Paint on all Walking Surfaces
- Various Trailer Light Plugs (Customer Choice)
- Aluminum or Steel Toolbox
- Air Brakes w/ ABS
- 3" Lunette Eye
- Wiring Connections Soldered and Sealed w/ Heat Shrink Tubing
- Plug-and-Play Sealco Wiring Harness
- Wheel Chocks: Rubber or All Weather Galvanized Grip Strut
- Spare Tire and Mount
- Solar Charged Breakaway Kit
- Strobe Warning Lights
- Truck-Lite Lighting



UNLESS OTHERWISE SPECIFIED:		DIMENSIONS ARE IN INCHES	
PROPERTY AND CONFIDENTIAL		TOLERANCE LIMITS	
THE INFORMATION CONTAINED IN THIS		FRACTIONAL .0005"	
DRAWING IS THE SOLE PROPERTY OF		DECIMAL .X = ±0.010	
REELSTRONG UTILITY FLEET, INC.		DECIMAL .XX = ±0.010	
IN PART OR AS A WHOLE WITHOUT THE		DECIMAL .XXX = ±0.005	
WRITTEN PERMISSION OF ReelStrong, Inc.		IS PROHIBITED.	
REELSTRONG UTILITY FLEET		V: 484-889-8248 F: 888-380-3132 info@reelstrongutility.com	
MATERIAL:		FINISH:	
TYPICAL WEIGHT:		SHEET 1 OF 2	
3363.98 LBS		DRAWING NOT TO SCALE	
DATE		PART NO.	
1/7/2020		504-000000	
TITLE:		PLC8	



UNLESS OTHERWISE SPECIFIED:				TITLE: PLC10	
PROPRIETARY AND CONFIDENTIAL THE INFORMATION CONTAINED IN THIS DRAWING IS THE SOLE PROPERTY OF REELSTRONG, INC. ANY REUSE OR REPRODUCTION IN PART OR AS A WHOLE WITHOUT THE WRITTEN PERMISSION OF ReelStrong, Inc. IS PROHIBITED.	DIMENSIONS ARE IN INCHES TOLERANCE LIMITS ANGULAR = ± 1.0° DECIMAL = ± .005 DECIMAL XX = ± .010 DECIMAL XXX = ± 0.005	MATERIAL:		REV	
		FINISH:		DATE:	
		ZDRFT WEIGHT:		PRODUCTION NO	
		DRWN:		DWG NO	
		DO NOT SCALE DRAWING		Sheet 1 OF 1	
				502-0000	