



PL8 POWERLOCK™ STRINGING REEL TRAILER SPECS



EXCLUSIVE STANDARD ADDED VALUE:

- POWERLOCK™ Technology Provides Industry Leading Safety, Ease of Use, Low Maintenance and Durability.
 - SAFETY and Peace of Mind
 - No Pins, Cotters, or Lanyards that Secure the Reel Arbor (which is the most critical safety point).
 - Faster Reel Loading, Unloading, and Deployment Reduces Labor Costs and Fatigue on Workers.

BUILT FOR SAFETY. BUILT FOR SPEED. BUILT TO LAST.

CAPACITIES

- PL8: 11,050 lbs. GVWR @ 15% Tongue Weight

AXLES

- PL8: 10K lbs. Sprung

WHEELS

- PL8: (2) 17.5 x 6.75 HC / 8 on 6.5 BC w/ 0.19 Inset

TIRES

- PL8: (2) ST-215/75R17.5 LR-H Tires

BRAKES

- PL8: 12.25" x 3.38" Electric w/ Safety Breakaway Kit

PAYLOAD: ALL FINAL PAYLOADS BASED ON CHOSEN MODEL AND OPTIONS

REEL WEIGHT (PAYLOAD)

- PL8: 8,000 lbs. Approx.

REEL DIAMETER: 96" Maximum

REEL WIDTH: 60" Maximum

REEL SHAFT DIAMETER: 2.50" Tube w/ Centering Collars

OVERALL LENGTH: 125.25" Approx.

OVERALL WIDTH: 95.75" Approx.

OVERALL WEIGHT: 1,750 lbs. Approx. (Actual Trailer Weight will Vary with Options & Finishes Chosen)

STANDARD FEATURES

- POWERLOCK™ Technology Provides Industry Leading Safety, Ease of Use, Low Maintenance and Durability.
- Oil Bath Hubs (Greaseable Option All)
- Electric Brakes
- Wheel Chock Holders

STANDARD TRAILER BODY

- Heavy Duty 5" X 2" X ¼" Frame
- 6-Position Adjustable Hitch

—All specifications / designs are subject to change without notice - All GVWR and reel capacities are de-rateable to your needs.

STANDARD TRAILER BODY (cont.)

- 3/8" X 36" GR70 Yellow Zinc Safety Chains with Hooks
- 8,000 lbs. Static Front Jack
- Ground Lug: Copper Alloy Bolted to Frame
- Fenders: 1/8" Plate
- (2) Rear 8,000 lbs. Static Stabilizer Jacks

WIRING

- DOT / ICC Approved LED Lights and Conspicuity Reflective Tape
- FMVSS / CMVSS Standard 108 LED Lighting
- Sealed Beam, Rubber Mounted Stop, Turn, Tail and Marker Lights
- 100% Sealed Heat-Shrunked Wiring Connections w/ Full Loom
- Breakaway Kit with Absorbed Glass Mat (AGM) Battery

PAINT

- I.M.P.A.C.T Intense Metal pH Acid Cleaning Technology
- Hydrofluoric, Sulfuric, Phosphoric ACID Blend Cleaning Preparation
(Re-used sandblasting material can impregnate metals with oil)
- Seams Caulked
- Rust Preventative 2-Part Epoxy Primer
- Standard Colors: Red, Black, White and CAT Yellow

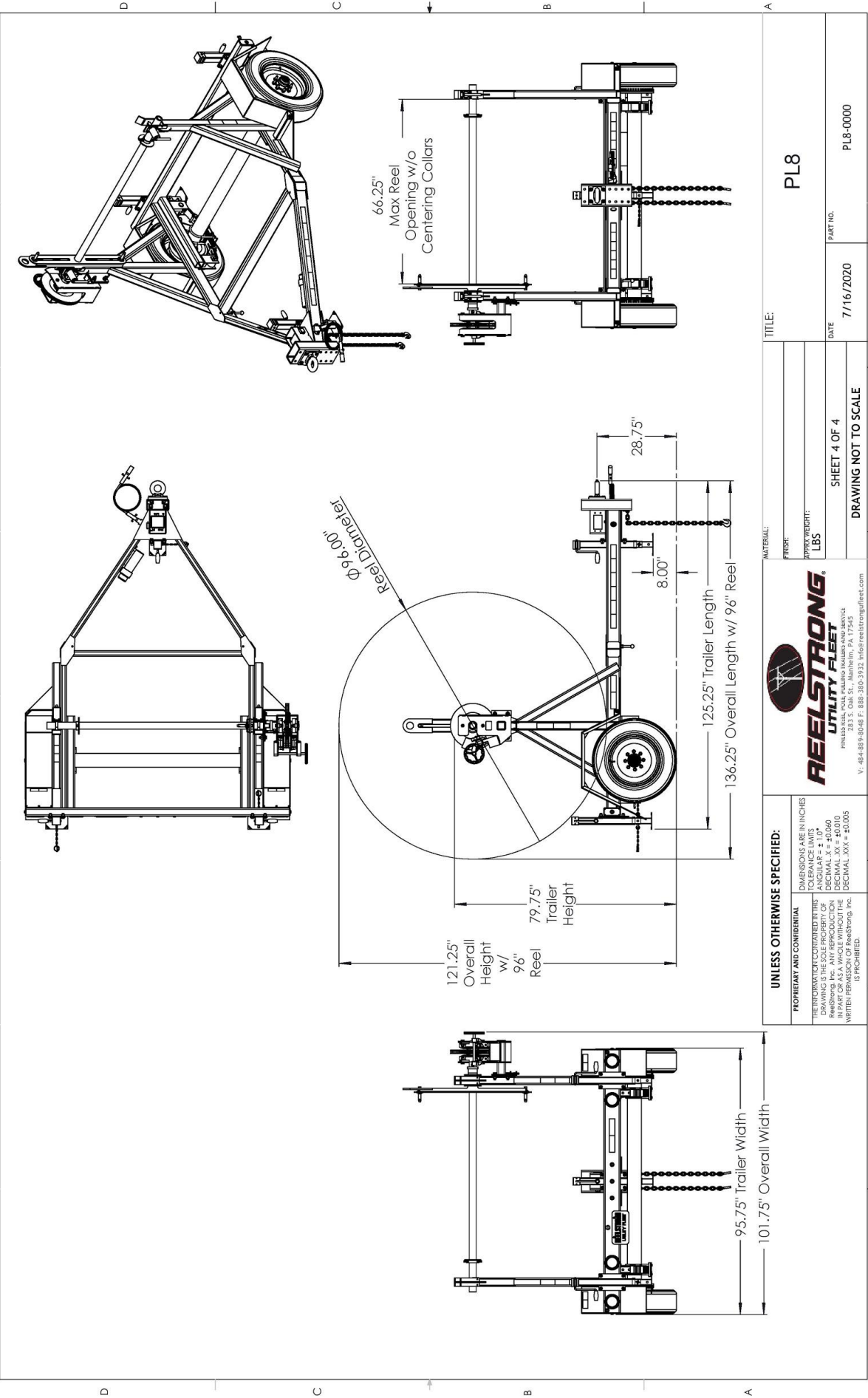
OPTIONS

- 13 HP HONDA Engine Hydraulic Power Pack Comes STANDARD w/ ENGINE COVER, 15 Gallon Reservoir, Replaceable Oil Filter, Pressure Gauge and Solar Fade Resistant Plastic Control Placard. (Electric Start Optional)
- 10-Year Galvanized Structural Warranty (2-Year Painted)
- 3,300 ft/lbs Hydraulic Take-up Retriever (Shown with Capstan & Adapter)
- 2-7/16" Universal Adapter for Capstan and Power Reel Attachments
- 7 Inch General Purpose Capstan
- Collapsible Power Reel
- Rotating Arbor Ground
- Auxiliary Hydraulic Quick-Connect Ports
- Rewind Leveler
- 16" Bronze Alloy Ventilated Reel Brake
- 9" Stainless Steel Overspin Brake
- 16" Long 6-Bolt Hitch Extension (w/ 52" Safety Chains and Breakaway Cable Extension)
- 3" Lunette Eye
- Aluminum or Steel Toolbox
- 10K-HD / 15K / 20K Axles Available w/ Air Brakes
- Anti-Lock Brakes (ABS)
- Wiring Connections Soldered and Sealed w/ Heat Shrink Tubing

OPTIONS (cont.)

- Plug-and-Play Sealco Wiring Harness
- Wheel Chocks: Rubber or All Weather Galvanized Grip Strut
- Spare Tire and Mount
- Solar Charged Breakaway Kit
- Strobe Warning Lights
- All Stainless Steel Fasteners (½" and under)
- Hydraulic Front Jack
- Truck-Lite Lighting
- Lug Nut Indicators

1 2 3 4 5 6 7 8



TITLE:		PL8	
MATERIAL:		SHEET 4 OF 4	
FINISH:		DRAWING NOT TO SCALE	
SUPPLY WEIGHT:		DATE	
LBS		7/16/2020	
		PART NO.	
		PL8-0000	

UNLESS OTHERWISE SPECIFIED:

PROPRIETARY AND CONFIDENTIAL

ALL DIMENSIONS ARE IN INCHES

ALL DIMENSIONS ARE TO FACE UNLESS NOTED OTHERWISE

DECIMAL XX = +0.010

DECIMAL XXX = +0.005

WRITTEN PERMISSION OF Reelstrong, Inc. IS PROHIBITED.

REELSTRONG
UTILITY FLEET

PHILADELPHIA, PA 19104
283 S. Oak St., Manheim, PA 17345
V: 484-889-8048 F: 888-380-3932 info@reelstrongfleet.com