



SPU-35 MOBILE OVD/URD UNIVERSAL P-LINE PULLER SPECS



EXCLUSIVE STANDARD ADDED VALUE:

- Industry Leading Safety, Ease of Use, Low Maintenance and Durability.
- Universal Adapter & Adjustable Rollers Accept Sherman & Reilly, TSE, & Eagle Spider Systems.
- Patent Pending 180° Degree Underground / Overhead Turret Winch Levelwind & Directional Control All-in-One.
- Hydraulic Rotating Turret Crane for Safety & Ease.
- Hydraulic Controlled Winch Traverse Prevents Runaway Winch,

BUILT FOR SAFETY. BUILT FOR SPEED. BUILT TO LAST.

MACHINE'S PURPOSE: The SPU-35 is a Pilot Line System for pulling in P-Lines, bull rope or direct to conductor. In many cases pulling directly to conductor can save a significant amount of labor.

PROS :

- **VERY VERSATILE**
- **3,000 LBS OF PULL IN A COMPACT, SELF-CONTAINED PACKAGE**
- **ACCEPTS S&R, TSE and EAGLE CONTROLLER BASED "SPIDER STYLE" STRINGING SYSTEMS**
- **OVERHEAD "AND" UNDERGROUND PULLER ILO FOUR DRUM JUST OVERHEAD**
- **PATENT PENDING 180 DEGREE ROTATING LEVELWIND AND DIRECTIONAL ALL-IN-ONE TURRET FOR ULTRA-EASY LEVELWINDING.**
- **PULL 90 DEGREE FROM RIGHT AWAYS. NO LINING TRUCK UP WITH WORK (IN MOST CASES)**
- **TRAILER IS COMPACT STORAGE FOR ROPE, REELS AND CONTROLLERS**

CONS:

- **CAN ONLY PULL ONE CONDUCTOR AT A TIME vs FOUR-DRUM PULLER**
- **MUST CHANGE OUT REELS WITH CRANE ONE AT A TIME**

CAPACITIES

- SPU-35: 9,200 lbs. GVWR @ 15% Tongue Weight

AXLES

- SPU-35: 8K lbs. Torsion

WHEELS

- SPU-35: (2) 17.5 x 6.75 HC / 8 on 6.5 BC w/ 0.19 Inset

TIRES

- SPU-35: (2) ST-215/75R17.5 LR-H Tires

BRAKES

- SPU-35: 12.25" x 3.38" Electric w/ Safety Breakaway Kit

PAYLOAD: ALL FINAL PAYLOADS BASED ON CHOSEN MODEL AND OPTIONS

REEL WEIGHT (PAYLOAD)

- SPU-35: 3,100 lbs. Approx. (Combined)

REEL DIAMETER: 30" Maximum

REEL WIDTH: 15.50" Maximum

REEL SHAFT DIAMETER: 2-7/16" Tube

OVERALL LENGTH: 17.5' Approx. (210.75")

OVERALL WIDTH: 97.25"

OVERALL WEIGHT: Actual Trailer Weight will Vary with Options & Finishes Chosen.

STANDARD FEATURES

- Industry Leading Safety, Ease of Use, Low Maintenance and Durability.
- Oil Bath Hubs (Greaseable Option All)
- Electric Brakes
- Wheel Chock Holders
- Vanguard 35 HP Engine Pack w/ Noise Suppression
- Adjustable Swing Away Seat
- Ultra-Smooth Torsion Axle
- Low Center of Gravity
- Wheel Chock Holders

—All specifications / designs are subject to change without notice - All GVWR and reel capacities are de-rateable to your needs.

FUNCTIONAL DESCRIPTION:

The Reelstrong UF Universal Mobile Spider System is a 100% self-contained overhead / underground pulling system that accepts all major Spider Systems that you may already own and / or wish to purchase, consolidating your fleet and tool equipment into a compact, time and money saving, half (½) ton towable package. The dual purpose Patent-Pending reel winch hydraulically rotates on a turret allowing for safe and convenient directional control of rope from any 180 degree angle in tight spots and “levelwinds” without the need for a hydraulic cylinder powered traversing fairlead. The reel lift crane is controlled by a tethering remote pendant keeping the operator safely away from the rotating crane and the “hydraulic traversing” (non free-sliding) which prevents the possibility of a runaway winch on uneven terrain further protecting the operator. It’s the most safe, convenient, and cost effective spider pulling system ever made.

STANDARD TRAILER BODY

- Heavy Duty 6” X 3” X ¼” Frame
- 6-Position Adjustable Hitch
- ¾” X 36” GR70 Yellow Zinc Safety Chains with Hooks
- (1) 12,000 lbs. Static Front Jack w/ Spring Return
- (4) 12,000 lbs. Static Stabilizer Jacks w/ Spring Return
- Ground Lug: Copper Alloy Bolted to Frame
- Fenders: ½” Plate

WIRING

- DOT / ICC Approved LED Lights and Conspicuity Reflective Tape
- FMVSS / CMVSS Standard 108 LED Lighting
- Sealed Beam, Rubber Mounted Stop, Turn, Tail and Marker Lights
- Plug-and-Play Sealco Wiring Harness
- Breakaway Kit with Absorbed Glass Mat (AGM) Battery

PAINT

- I.M.P.A.C.T Intense Metal pH Acid Cleaning Technology
- Hydrofluoric, Sulfuric, Phosphoric ACID Blend Cleaning Preparation
(Re-used sandblasting material can impregnate metals with oil)
- Seams Caulked
- Rust Preventative 2-Part Epoxy Primer
- Standard Colors: Red, Black, White and CAT Yellow

OPTIONS

- 10-Year Galvanized Structural Warranty (2-Year Painted)
- Auxiliary Hydraulic Quick-Connect Ports
- 16” Hitch Extension

—All specifications / designs are subject to change without notice - All GVWR and reel capacities are de-rateable to your needs.

OPTIONS (cont.)

- Aluminum or Steel Toolbox
- 3" Lunette Eye
- Wiring Connections Soldered and Sealed w/ Heat Shrink Tubing
- Hydraulic Front Jack
- (4) Hydraulic Stabilizer Jacks
- Wheel Chocks: Rubber or All Weather Galvanized Grip Strut
- Spare Tire and Mount
- Solar Charged Breakaway Kit
- 12" Caster Wheel for Tongue Jack
- Strobe Warning Lights
- All Stainless Steel Fasteners (½" and under)
- 7 Inch Capstan
- Collapsible Power Reel
- Fiber Optic Clutch Capstan

ESTIMATE LINE TENSION (IN LBS) BY ALIGNING THE PULLING DIAMETER TO THE HYDRAULIC PRESSURE SETTING														
		PULLING MOTOR HYDRAULIC PRESSURE GAUGE READING (IN PSI)												
		200	400	600	800	1000	1200	1400	1600	1800	2000	2200	2400	2600
P U L L I N G D I A M E T E R	30	139	277	416	555	693	832	971	1109	1248	1387	1525	1664	1803
	28	149	297	446	594	743	891	1040	1189	1337	1486	1634	1783	1931
	26	160	320	480	640	800	960	1120	1280	1440	1600	1760	1920	2080
	24	173	347	520	693	867	1040	1213	1387	1560	1733	1907	2080	2253
	22	189	378	567	756	945	1135	1324	1513	1702	1891	2080	2269	2458
	20	208	416	624	832	1040	1248	1456	1664	1872	2080	2288	2496	2704
	18	231	462	693	924	1156	1387	1618	1849	2080	2311	2542	2773	3004
	16	260	520	780	1040	1300	1560	1820	2080	2340	2600	2860	3120	3380
	14	297	594	891	1189	1486	1783	2080	2377	2674	2971	3269	3566	3863
XXXX		OVERHEAD PULLING SETTINGS												

ESTIMATE LINE SPEED BY ALIGNING THE FLOW CONTROL SETTING TO THE PULLING DIAMETER											
			PULLING DIAMETER								
			14	16	18	20	22	24	26	28	30
F L O W C O N T R O L	100%	FT/MIN	126.8	144.9	163.0	181.2	199.3	217.4	235.5	253.6	271.7
		MPH	1.4	1.6	1.9	2.1	2.3	2.5	2.7	2.9	3.1
	75%	FT/MIN	95.1	108.7	122.3	135.9	149.5	163.0	176.6	190.2	203.8
		MPH	1.1	1.2	1.4	1.5	1.7	1.9	2.0	2.2	2.3
	50%	FT/MIN	63.4	72.5	81.5	90.6	99.6	108.7	117.8	126.8	135.9
		MPH	0.7	0.8	0.9	1.0	1.1	1.2	1.3	1.4	1.5
	25%	FT/MIN	31.7	36.2	40.8	45.3	49.8	54.3	58.9	63.4	67.9
		MPH	0.4	0.4	0.5	0.5	0.6	0.6	0.7	0.7	0.8
			ESTIMATES ARE BASED ON ENGINE SPEED OF 2500 RPM'S								

—All specifications / designs are subject to change without notice - All GVWR and reel capacities are de-rateable to your needs

PE-12/Pilot Line



PE-12

PE-12 has been re-engineered, boosting its strengths significantly. Using the same high-tenacity fiber we use in our value-packed Portland Braid, this polyester single braid offers a single-end-per-carrier construction, which keeps the rope from flattening out in service and self centers in sheaves beautifully. PE-12 comes with

the same tough grades of Maxijacket urethane we use on our more expensive products. PE-12 is easy to splice, and field repairs are easily accomplished. It is available in unlimited lengths and brilliant colors for easy identification. PE-12 is torque free and is undamaged when rigging with swivels.

Specifications

Diameter		Average Spliced Break Strength*		Minimum Spliced Break Strength*		Maximum** Working Load 5:1		Weight	
Inches	(mm)	Lbs	Kg	Lbs	Kg	Lbs	Kg	Lbs/100ft	Kg/100m
5/16	(8)	3,900	1,770	3,510	1,593	780	354	2.9	4.3
3/8	(10)	5,900	2,675	5,310	2,408	1,180	535	3.9	5.8
7/16	(11)	10,000	4,540	9,000	4,086	2,000	980	6.4	9.5
1/2	(13)	12,500	5,675	11,250	5,108	2,500	1,135	8.5	12.7
9/16	(14)	15,800	7,170	14,220	6,453	3,160	1,434	10.5	15.6
5/8	(16)	18,500	8,395	16,650	7,556	3,700	1,679	11.4	17.0
3/4	(19)	23,250	10,555	20,925	9,500	4,650	2,111	17.4	25.9
7/8	(22)	34,350	15,590	30,915	14,031	6,870	3,118	25.9	38.6
1	(25)	41,600	18,885	37,440	16,997	8,320	3,777	31.3	46.6



Pilot Line

Pilot Line is a 12-strand 100% polyester single braid with Maxijacket coating to improve abrasion resistance.

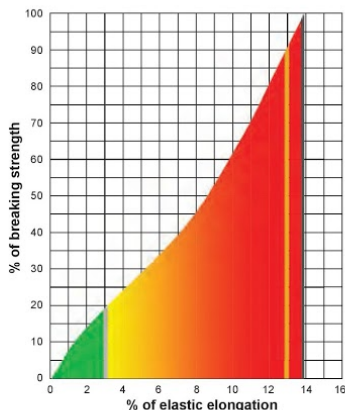
It is used as a pilot line for stringing applications. Available in standard colors of black, blue, green and red. Other colors available upon request.

Specifications

Nominal Diameter		Average Spliced Break Strength*		Minimum Spliced Break Strength*		Maximum** Working Load 5:1		Weight	
Inches	(mm)	Lbs	Kg	Lbs	Kg	Lbs	Kg	Lbs/100ft	Kg/100m
5/16	(8)	3,600	1,630	3,240	1,467	720	326	2.3	3.4

* Knots and abrupt bends significantly reduce the strength of all ropes and lower maximum working load.

** Working load is based on static or moderately dynamic lifting/pulling operations. Instantaneous changes in load up or down, in excess of 10% of the rope's rated working load constitute hazardous shock load and would void the normal working-load recommendation. Consult Yale Cordage for guidelines for working loads and the safe use of rope.



Energy Absorption

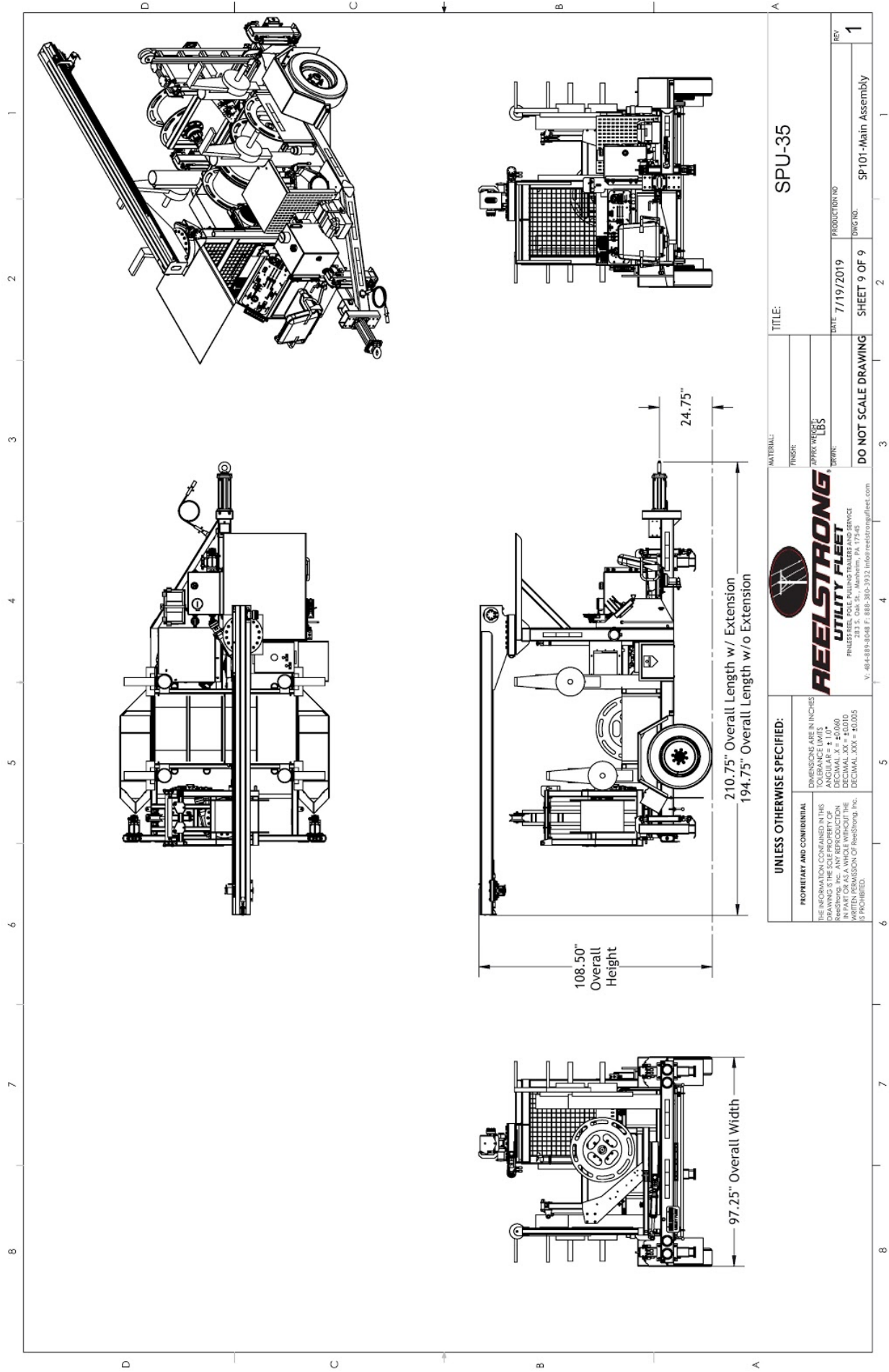
The colored area under the curve represents the rope's ability to do "work" and is expressed in foot-pounds per pound of rope in tension.

- Green working 406 ft. lbs./lb.
- Red ultimate 8,738 ft. lbs./lb.

Dielectric Strength: The maximum allowable leakage for clean, dry PE-12 and Pilot Line is 100 micro-amperes when tested at 100kV per Yale Method 712-1701 Rev 1 "Routine Production Test." Absorbed and entrained moisture or impurities will increase rope's conductivity dramatically.

Approved Splice Technique: #10015101.

- Maximum Working Load
 - Minimum Break Strength
 - Average Break Strength
- Specific Gravity: 1.38



UNLESS OTHERWISE SPECIFIED: <small> DIMENSIONS ARE IN INCHES TOLERANCE LIMITS ANGULAR = ± 1.0° DECIMAL .X = ±0.060 FRACTIONS OF AN INCH = ±0.005 DECIMAL .XXX = ±0.005 THE INFORMATION CONTAINED IN THIS DRAWING IS THE SOLE PROPERTY OF REELSTRONG, INC. ANY REPRODUCTION OR TRANSMISSION OF THIS DRAWING WITHOUT THE WRITTEN PERMISSION OF REELSTRONG, INC. IS PROHIBITED. </small>		REELSTRONG[®] UTILITY FLEET <small> FINLESS REEL, POLE, PULPING TRAILERS AND SERVICE 1000 W. MARKET ST., SUITE 100, WILKES-BARE, PA 17966 V. 484-889-6668 F. 888-383-3932 info@reelstrong.com </small>		MATERIAL: _____ FINISH: _____ APPROX WEIGHT: 185 DRAWN: _____		TITLE: SPU-35	
DO NOT SCALE DRAWING		DATE: 7/19/2019		PRODUCTION NO: _____		SHEET 9 OF 9	
				DWG NO: SP101-Main Assembly		REV: 1	